

results sample 1

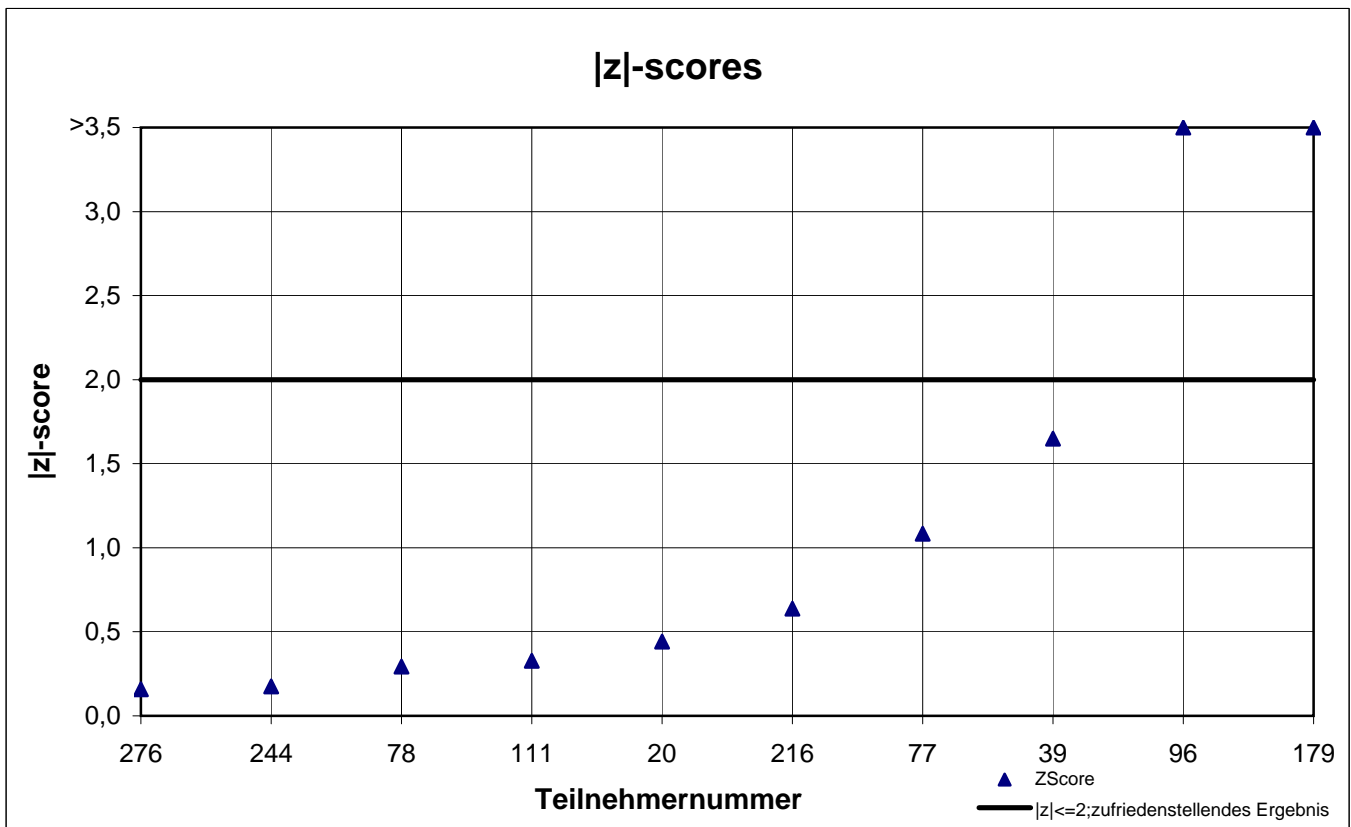
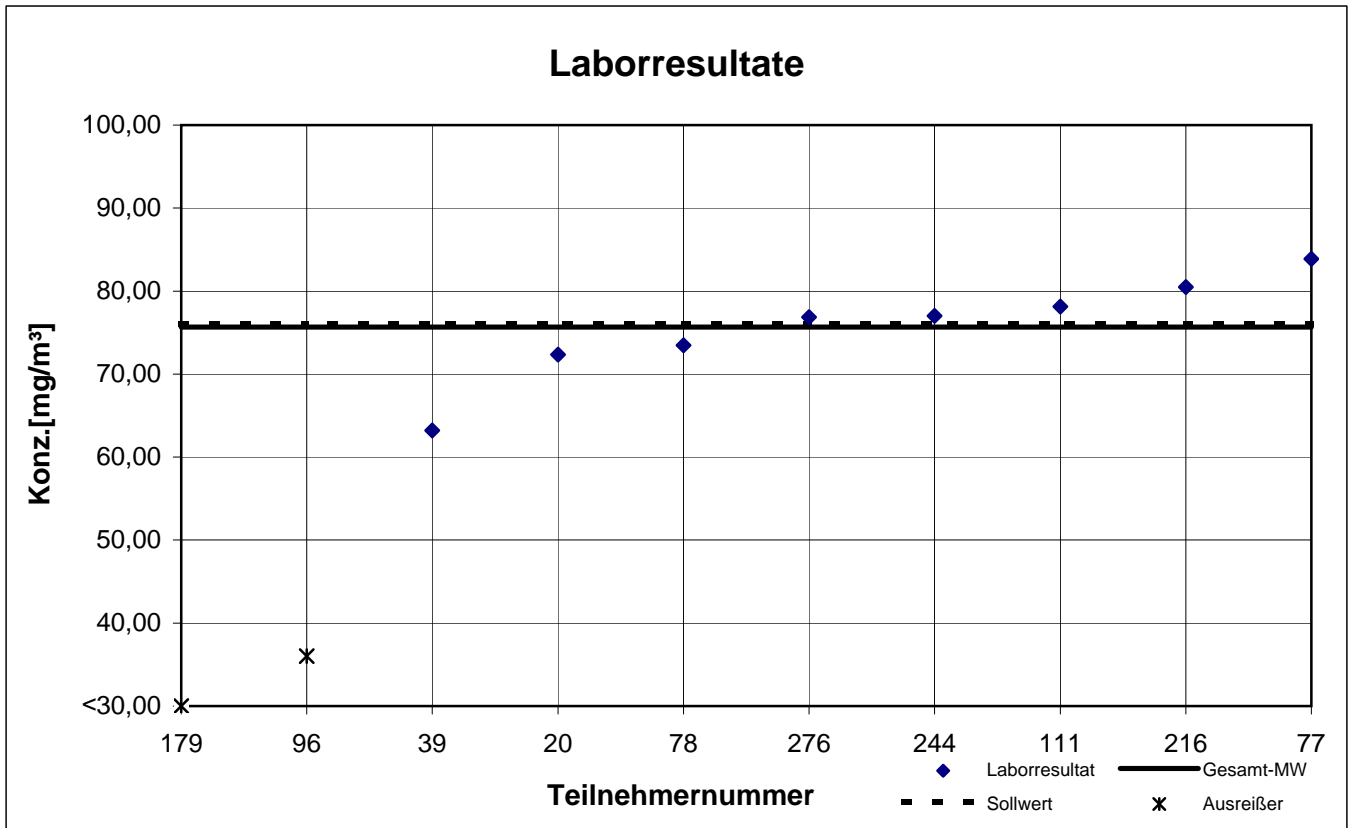
participant number	Methanol	
	result [mg/m ³]	z - score
20	72,33	0,4
39	63,20	1,6
77	83,88	1,1
78	73,46	0,3
96	36,00	5,2
111	78,15	0,3
134	k.A.	k.A.
179	16,08	7,9
216	80,50	0,6
244	77,00	0,2
276	76,87	0,2

 marked fields are outliers!

	Methanol
mean c_k [mg / m ³]	75,67
standard deviation S_k [mg/m ³]	6,229
relative standard deviation [%]	8,23
reference value [mg/m ³]	76,00

Probe 1

Methanol



results sample 2

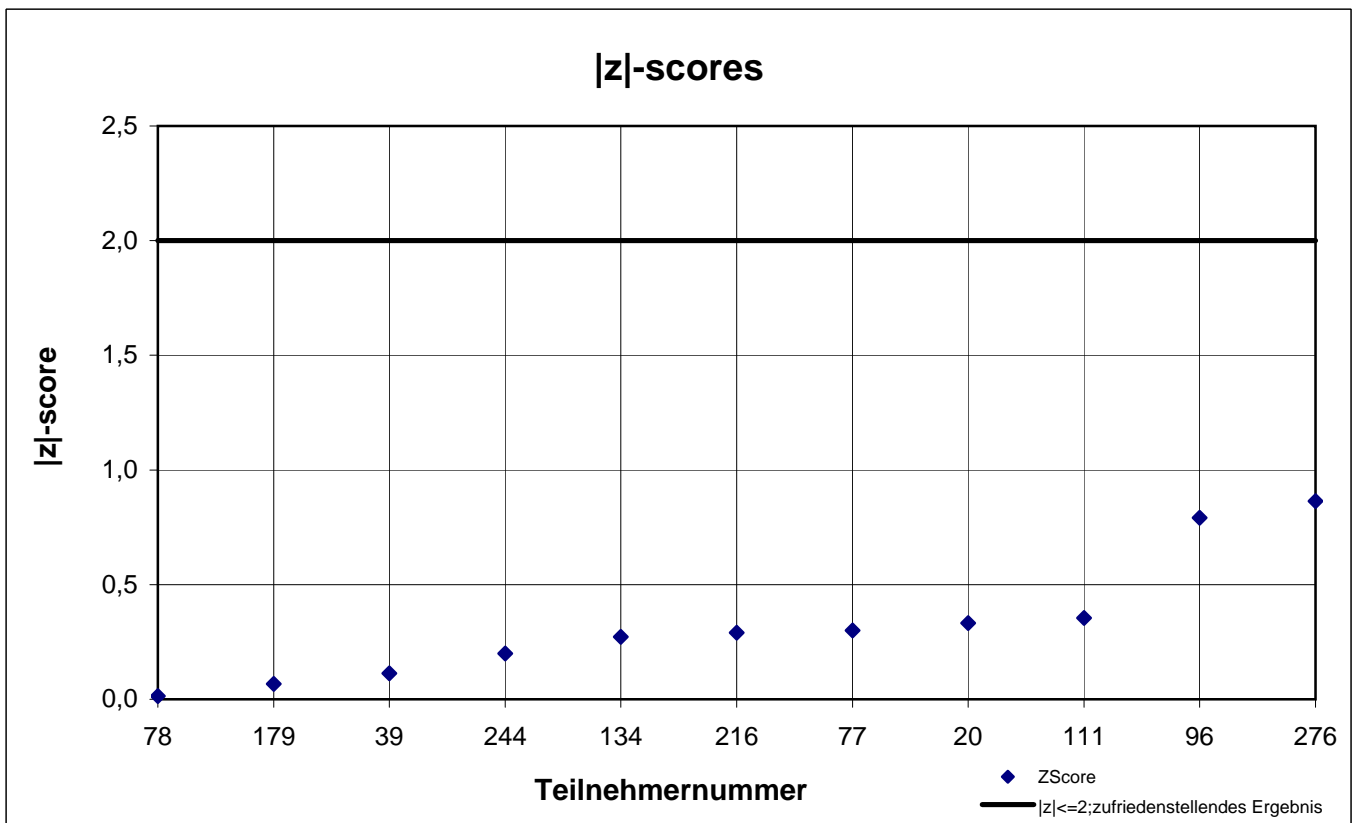
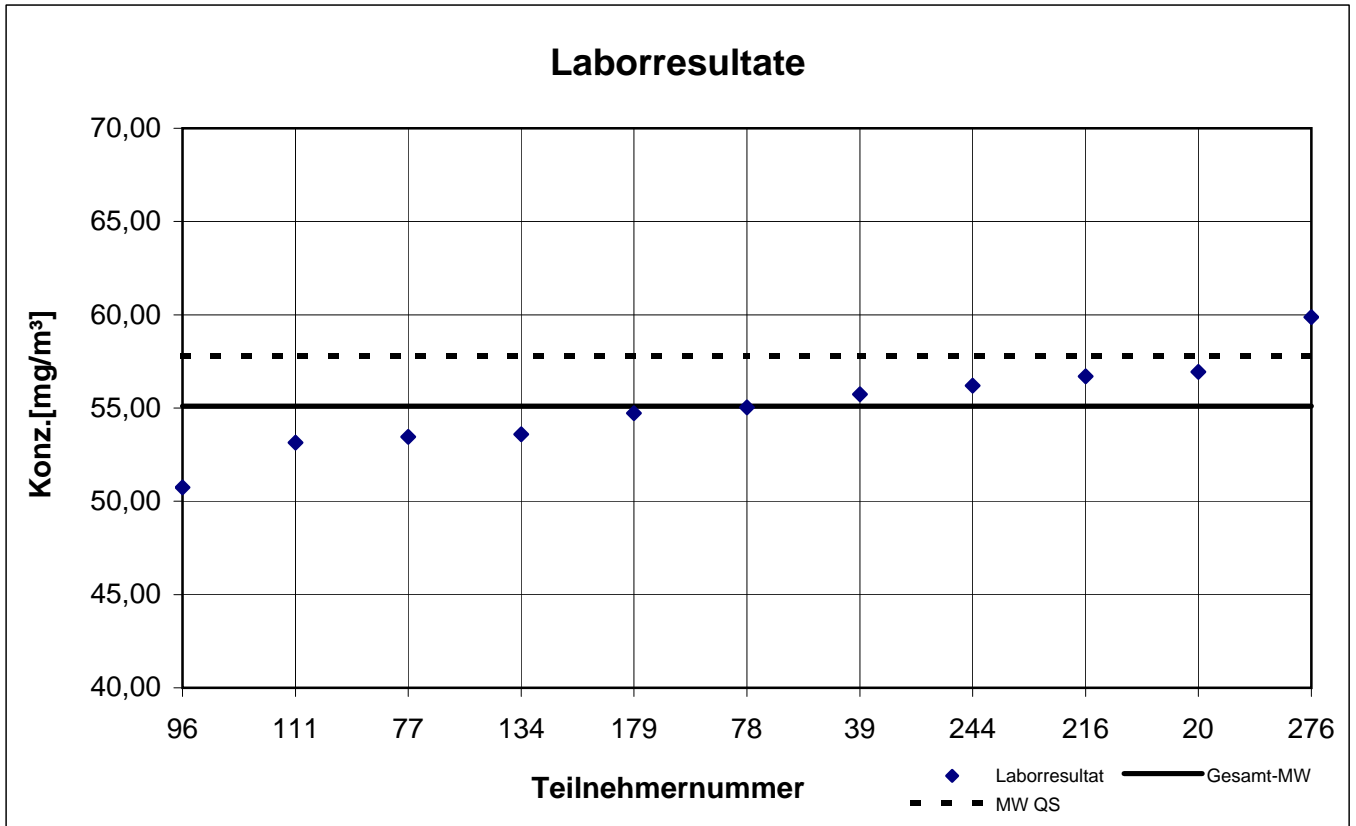
participant number	1-Butanol		Ethylbenzene		n-Butyl acetate		n-Heptane		p-Xylene		Toluene	
	result [mg/m ³]	z - score	result [mg/m ³]	z - score	result [mg/m ³]	z - score	result [mg/m ³]	z - score	result [mg/m ³]	z - score	result [mg/m ³]	z - score
20	56,93	0,3	80,73	0,5	92,87	0,4	101,2	0,1	56,50	0,0	75,80	0,3
39	55,73	0,1	84,85	0,0	97,88	0,2	98,25	0,4	57,36	0,2	79,33	0,2
77	53,45	0,3	80,26	0,6	57,12	4,1	95,29	0,7	57,12	0,1	75,06	0,4
78	55,03	0,0	79,42	0,7	92,30	0,4	96,51	0,6	55,44	0,2	78,73	0,1
96	50,74	0,8	82,52	0,3	93,96	0,2	99,29	0,3	56,79	0,1	76,44	0,2
111	53,15	0,4	80,95	0,5	92,40	0,4	106,9	0,4	48,55	1,4	77,70	0,0
134	53,60	0,3	82,10	0,3	92,30	0,4	96,40	0,6	57,20	0,1	74,40	0,4
179	54,73	0,1	93,18	1,0	104,0	0,8	112,2	0,9	64,89	1,5	86,14	1,1
216	56,70	0,3	99,30	1,7	103,7	0,8	111,5	0,9	50,90	1,0	79,70	0,2
244	56,20	0,2	84,13	0,1	94,93	0,1	107,7	0,5	56,17	0,0	73,80	0,5
276	59,87	0,9	88,23	0,4	98,90	0,3	102,6	0,0	59,90	0,6	78,90	0,1

marked fields are outliers!

	1-Butanol	Ethylbenzene	n-Butyl acetate	n-Heptan	p-Xylene	Toluene
mean c_k [mg / m ³]	55,10	85,06	96,33	102,5	56,44	77,82
standard deviation S_k [mg/m ³]	2,411	6,208	4,592	6,135	4,236	3,443
relative standard deviation [%]	4,38	7,30	4,77	5,98	7,51	4,42
mean value of control samples [mg/m ³]	57,80	87,90	95,60	105,7	59,00	77,90

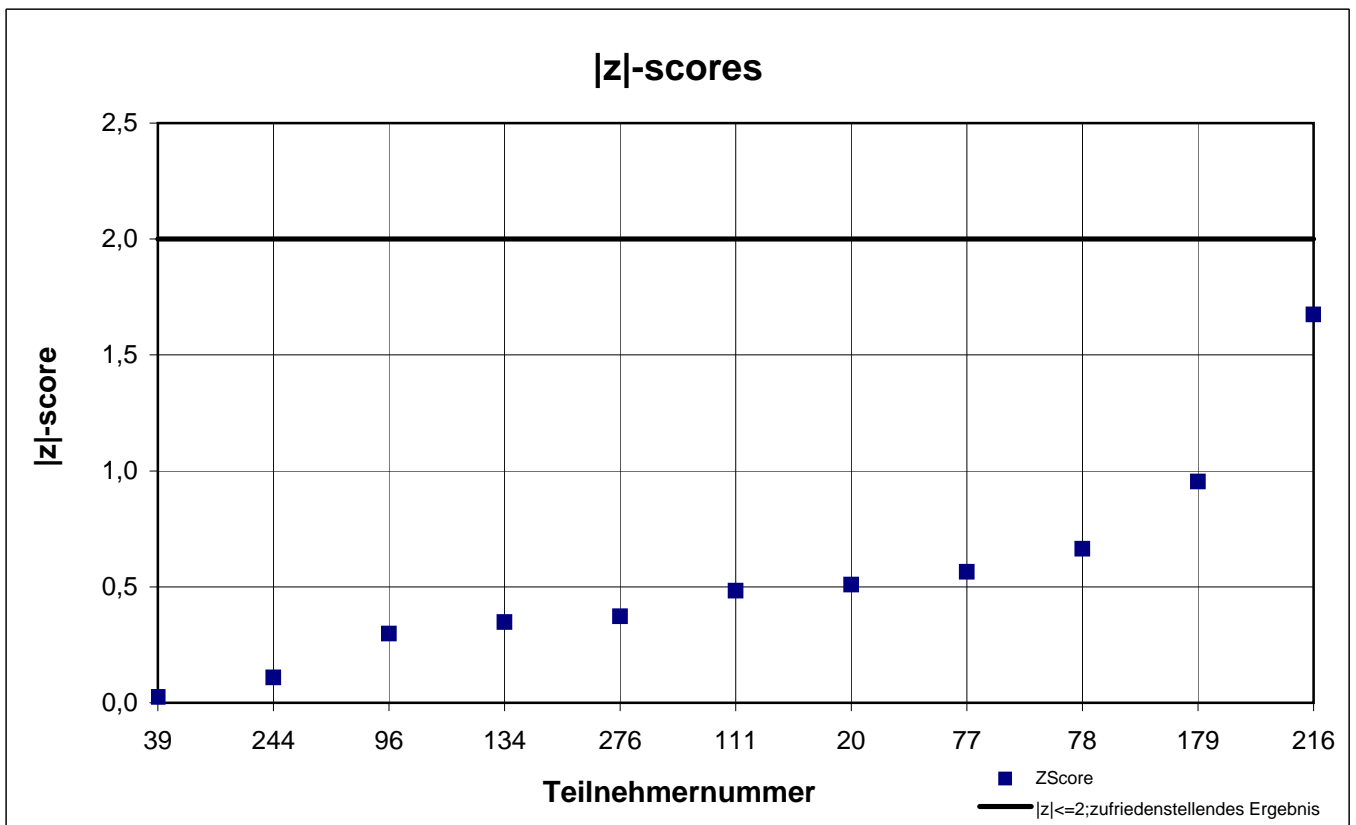
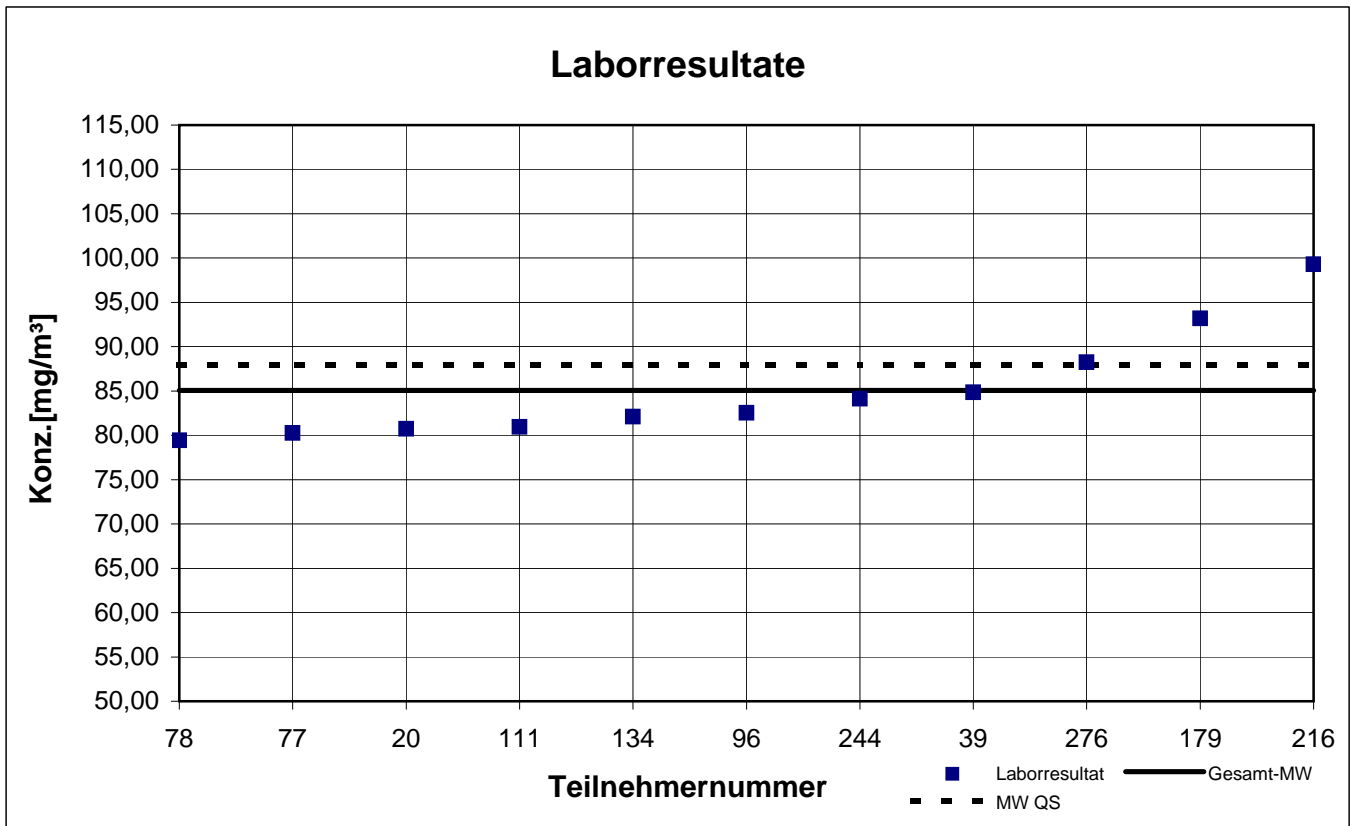
Probe 2

1-Butanol



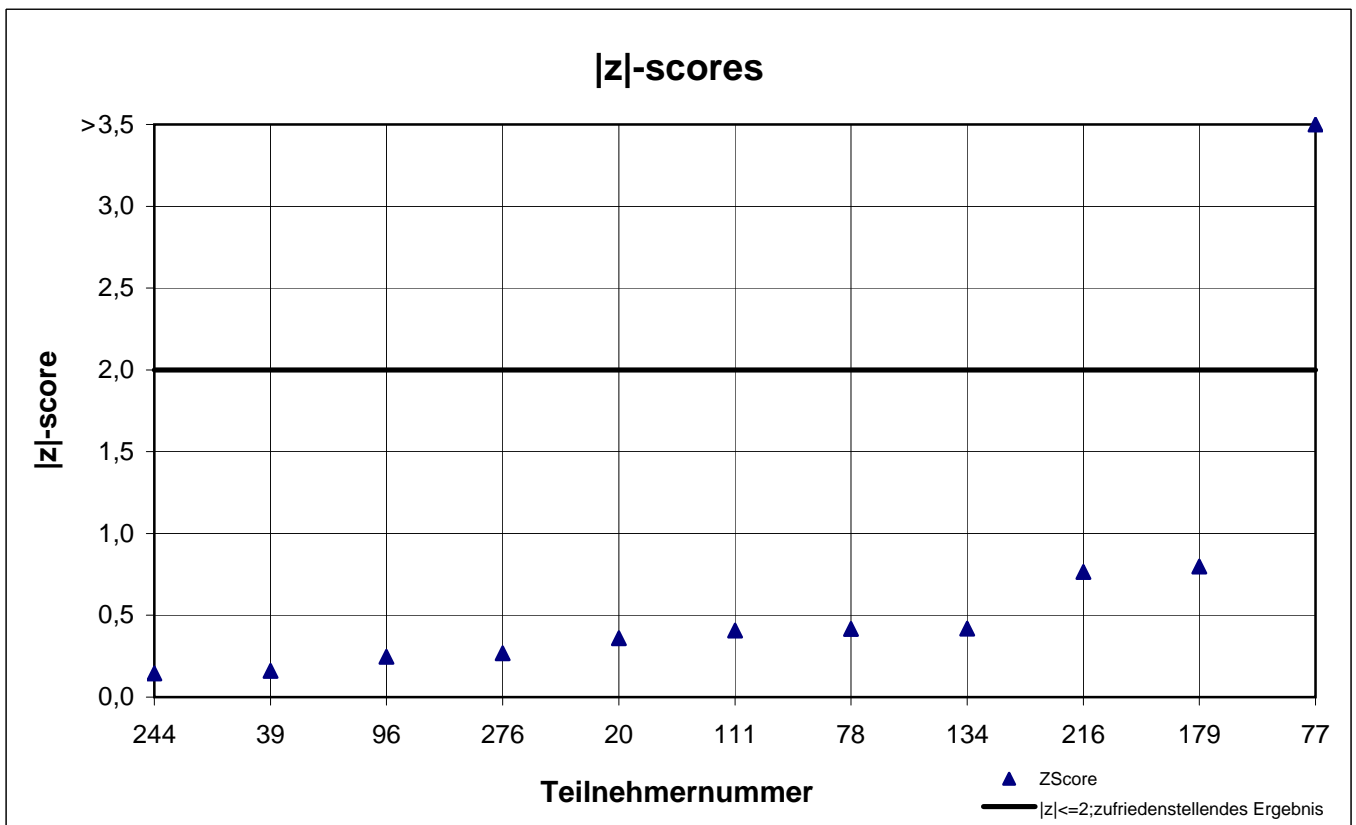
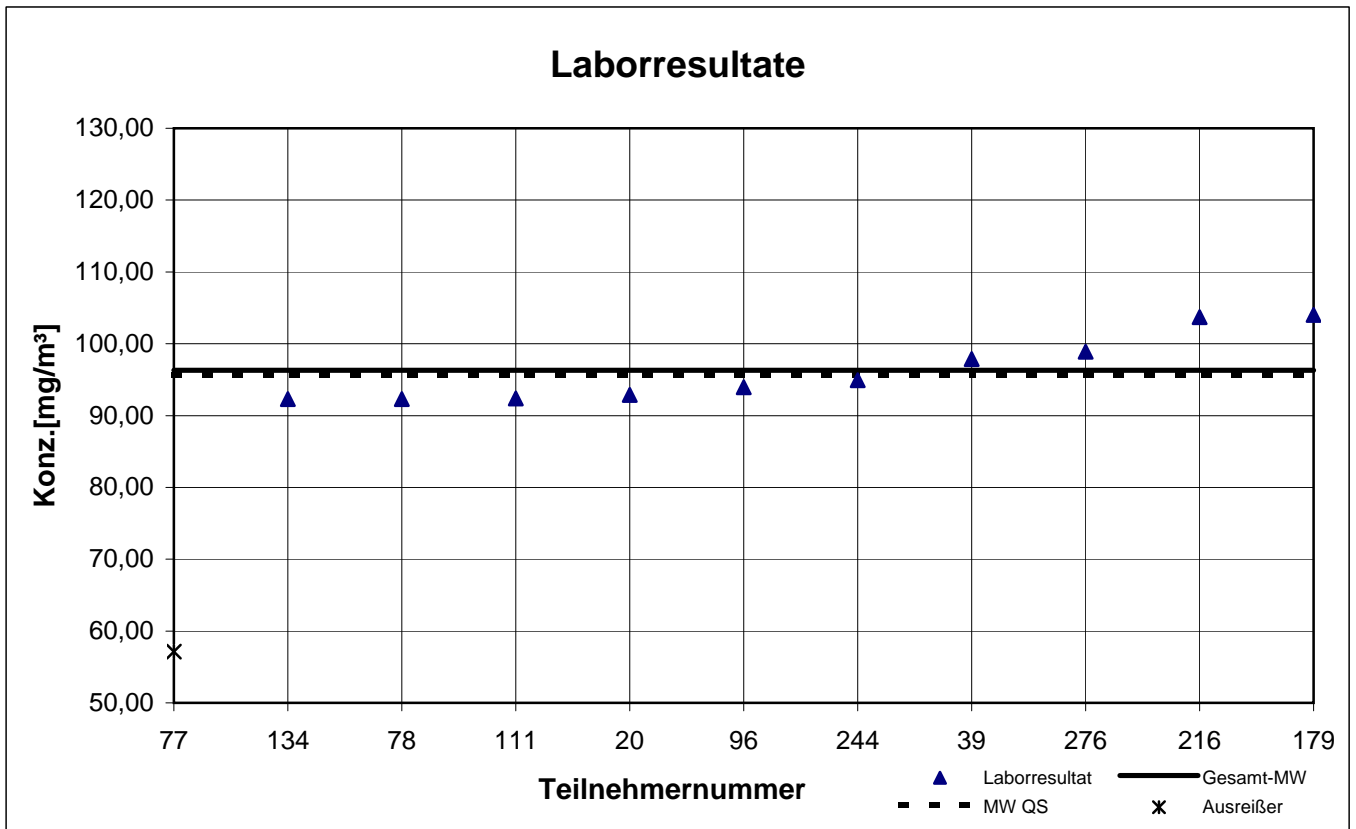
Probe 2

Ethylbenzol



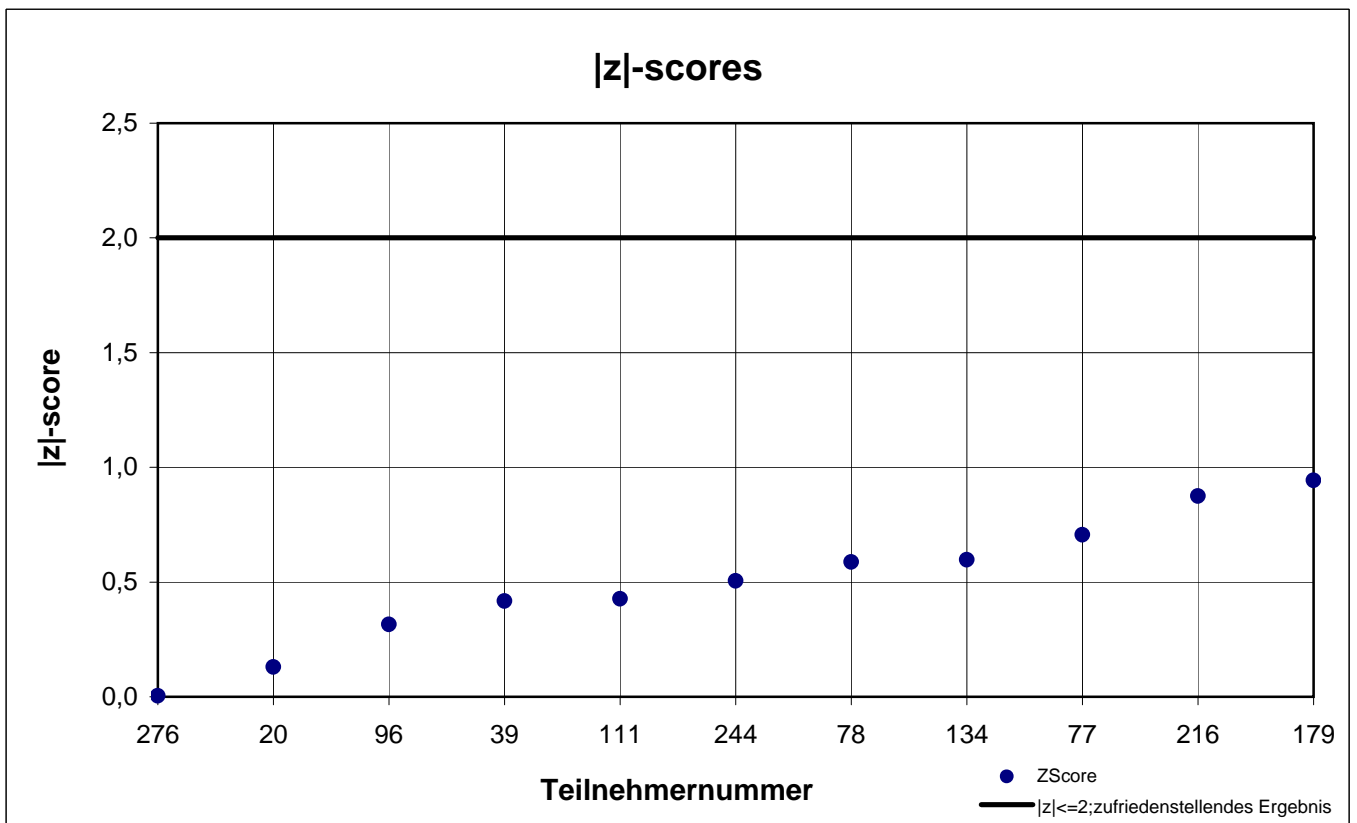
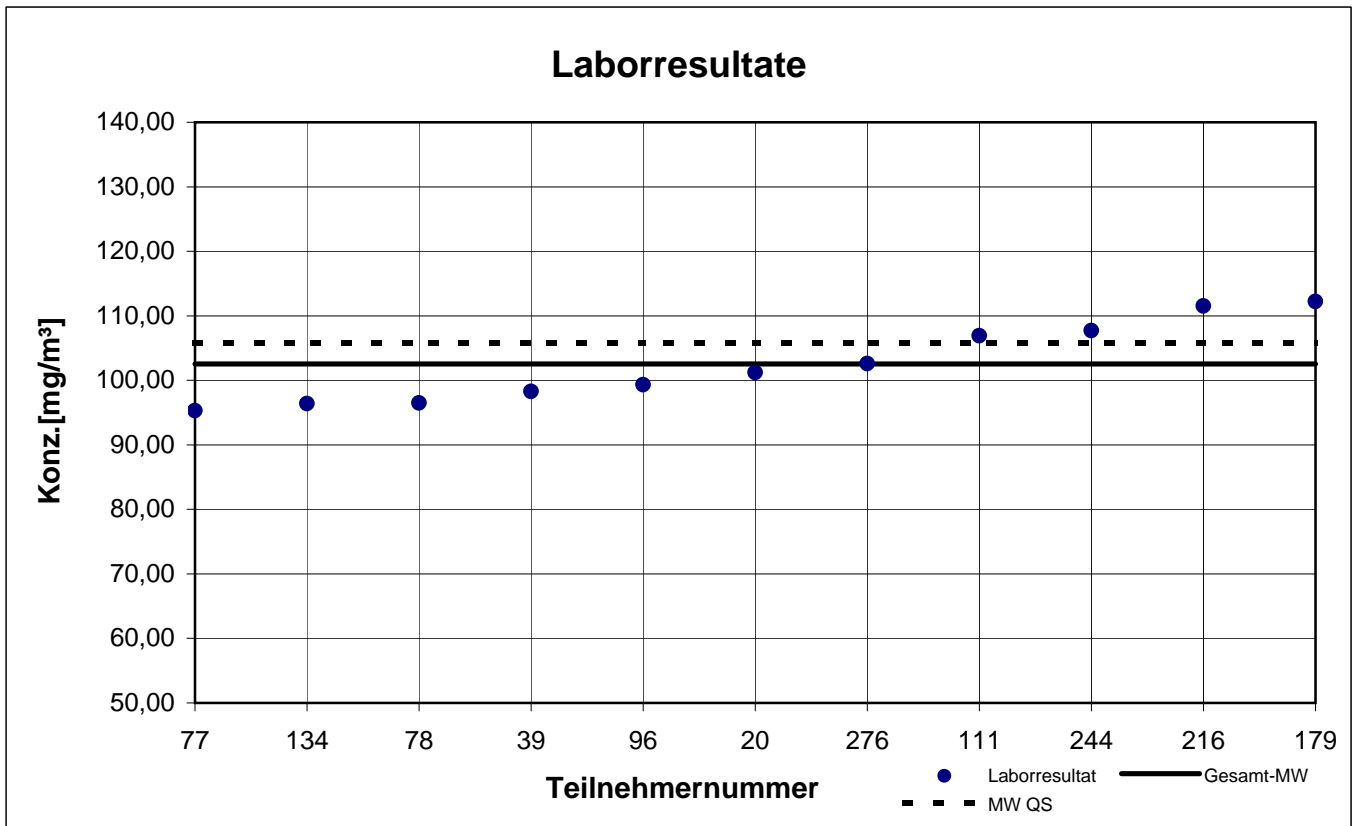
Probe 2

n-Butylacetat



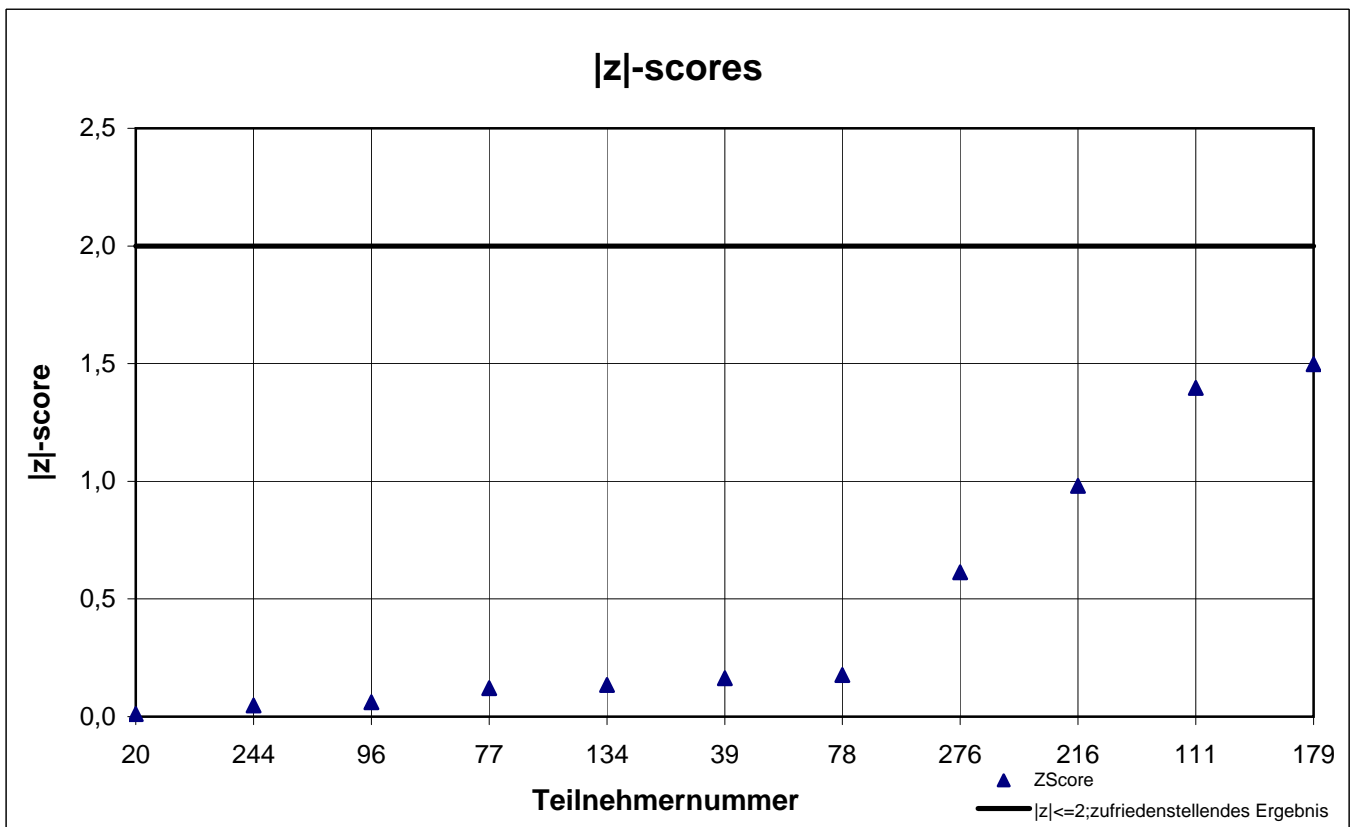
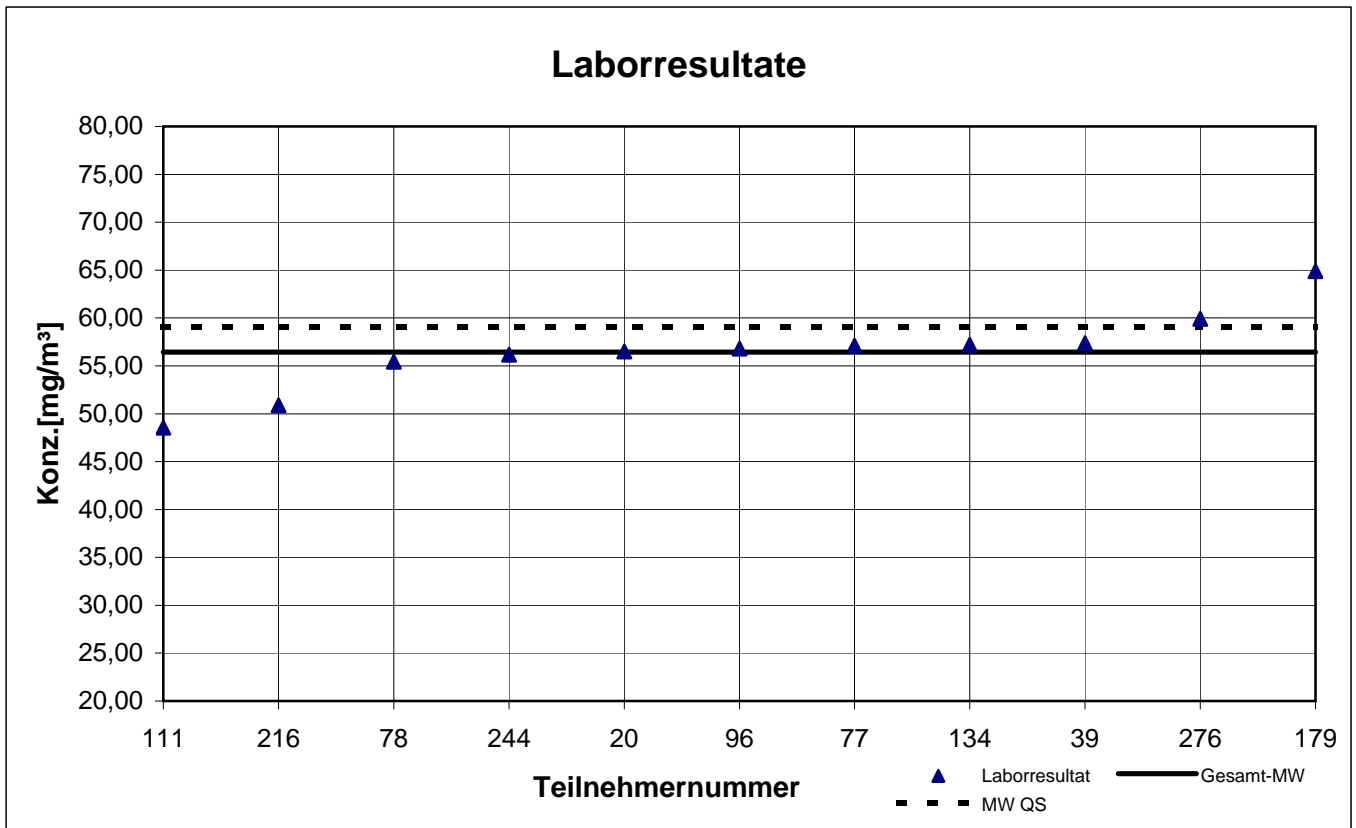
Probe 2

n-Heptan



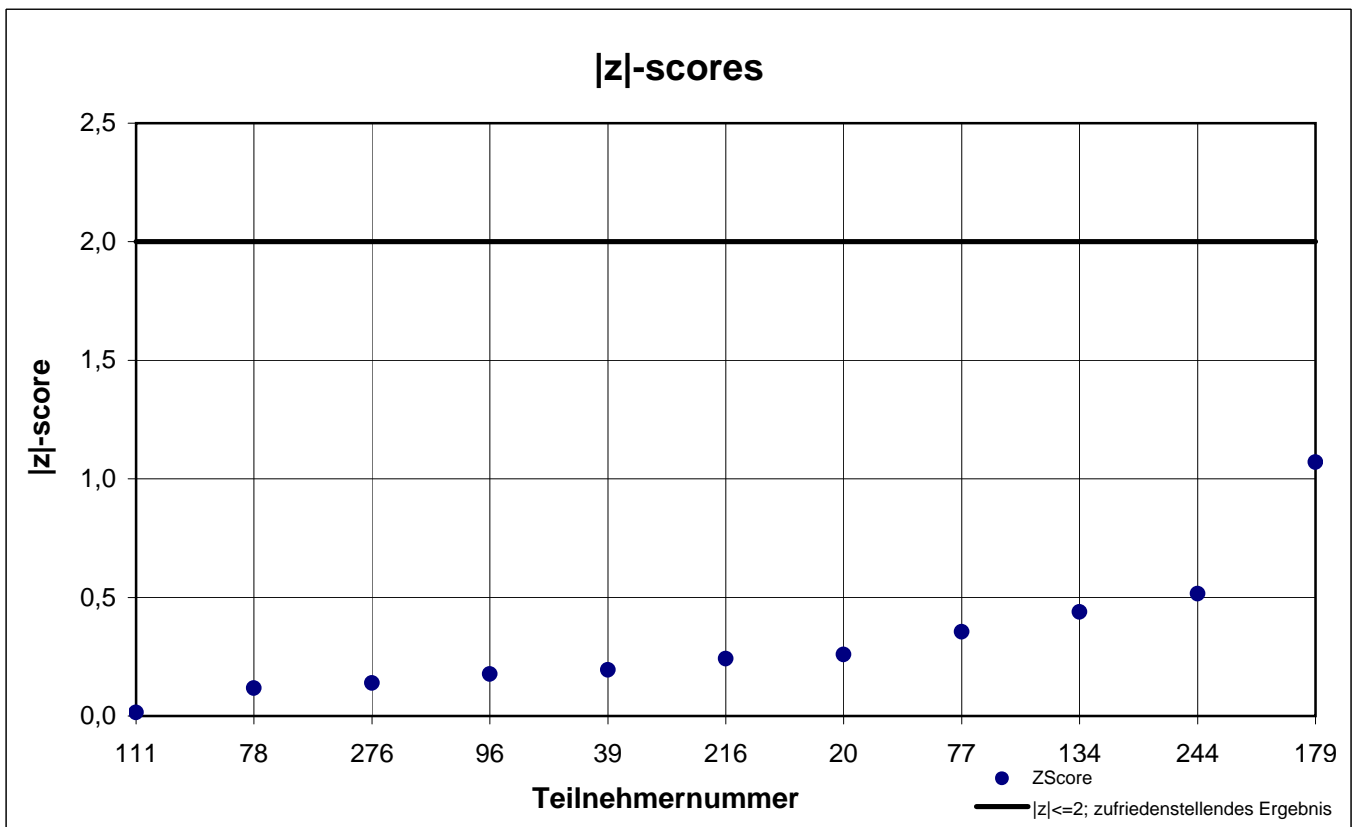
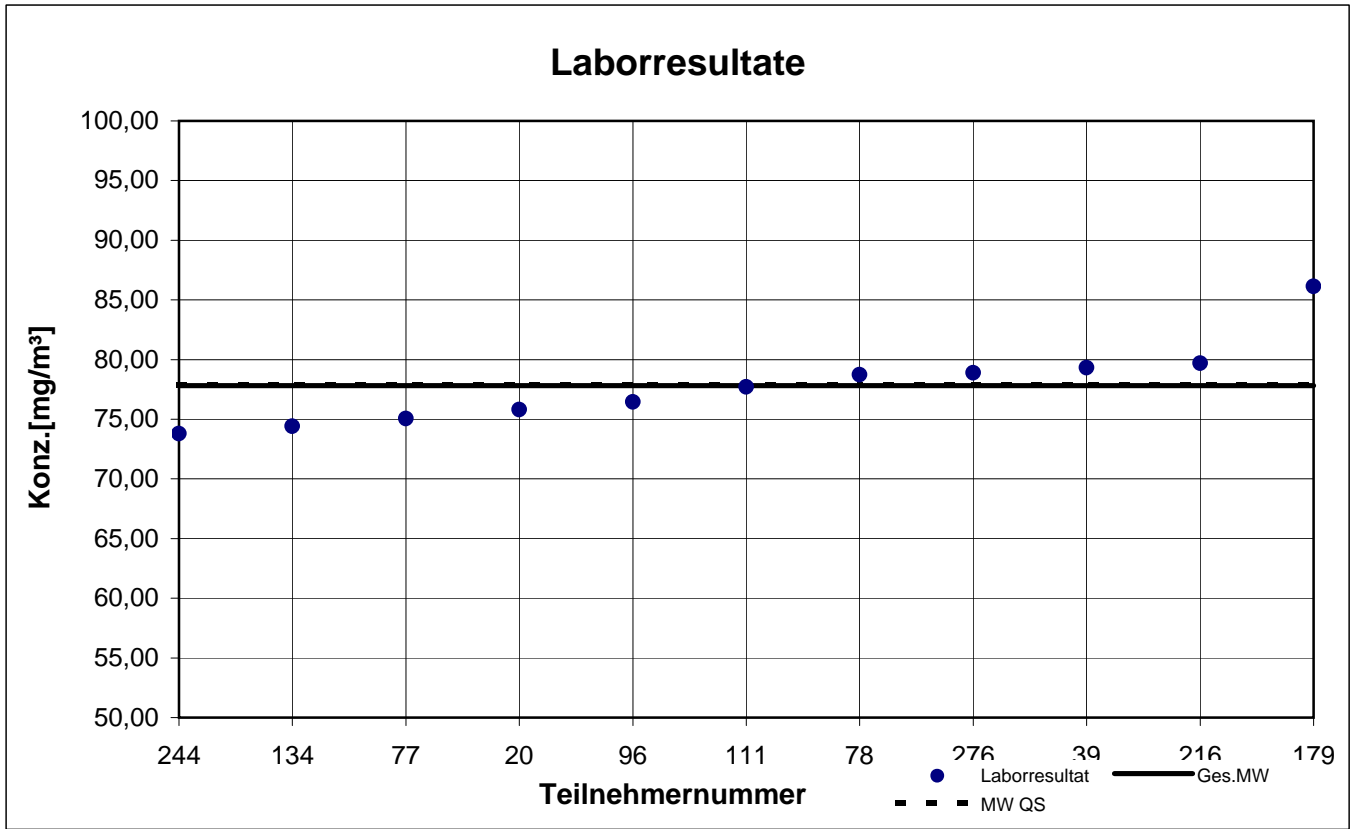
Probe 2

p-Xylol



Probe 2

Toluol



results sample 3

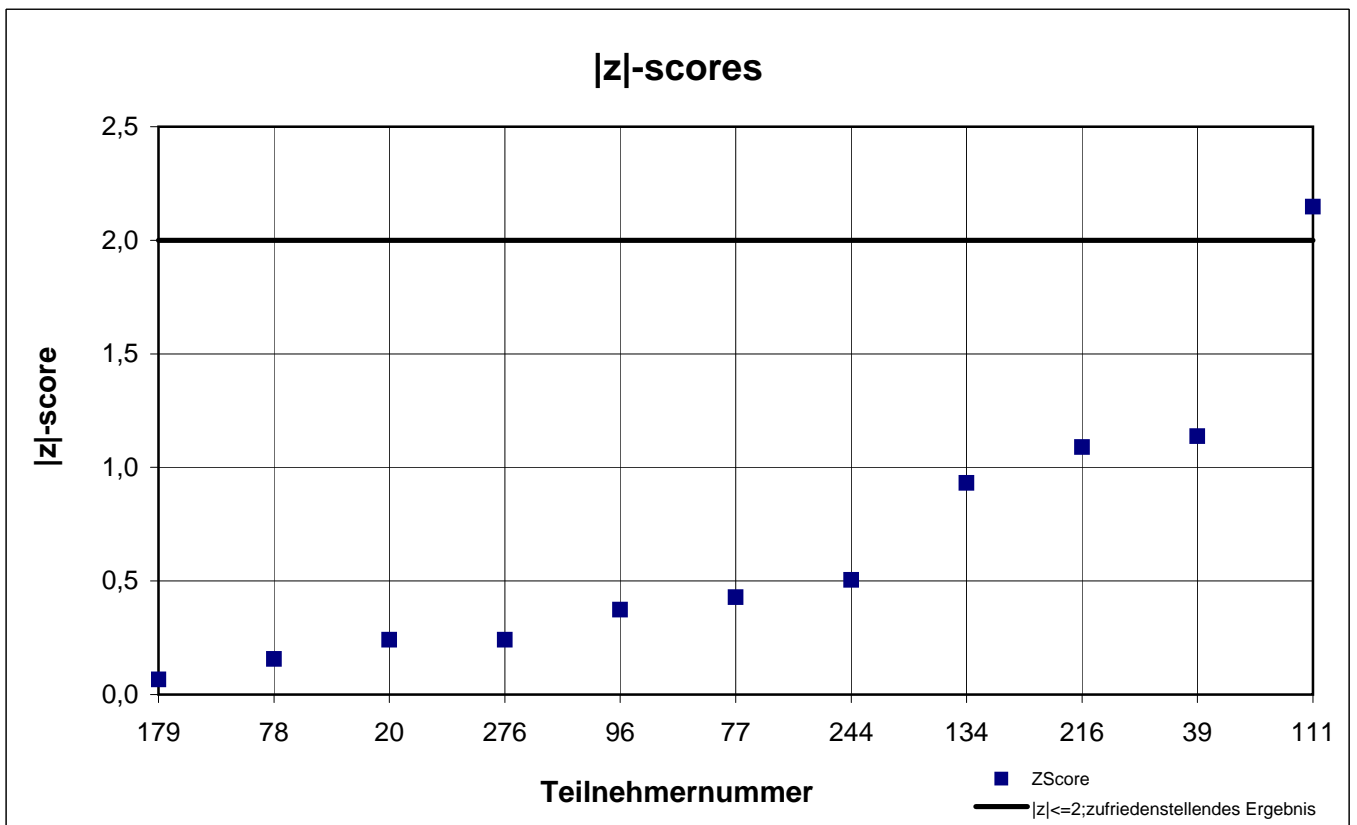
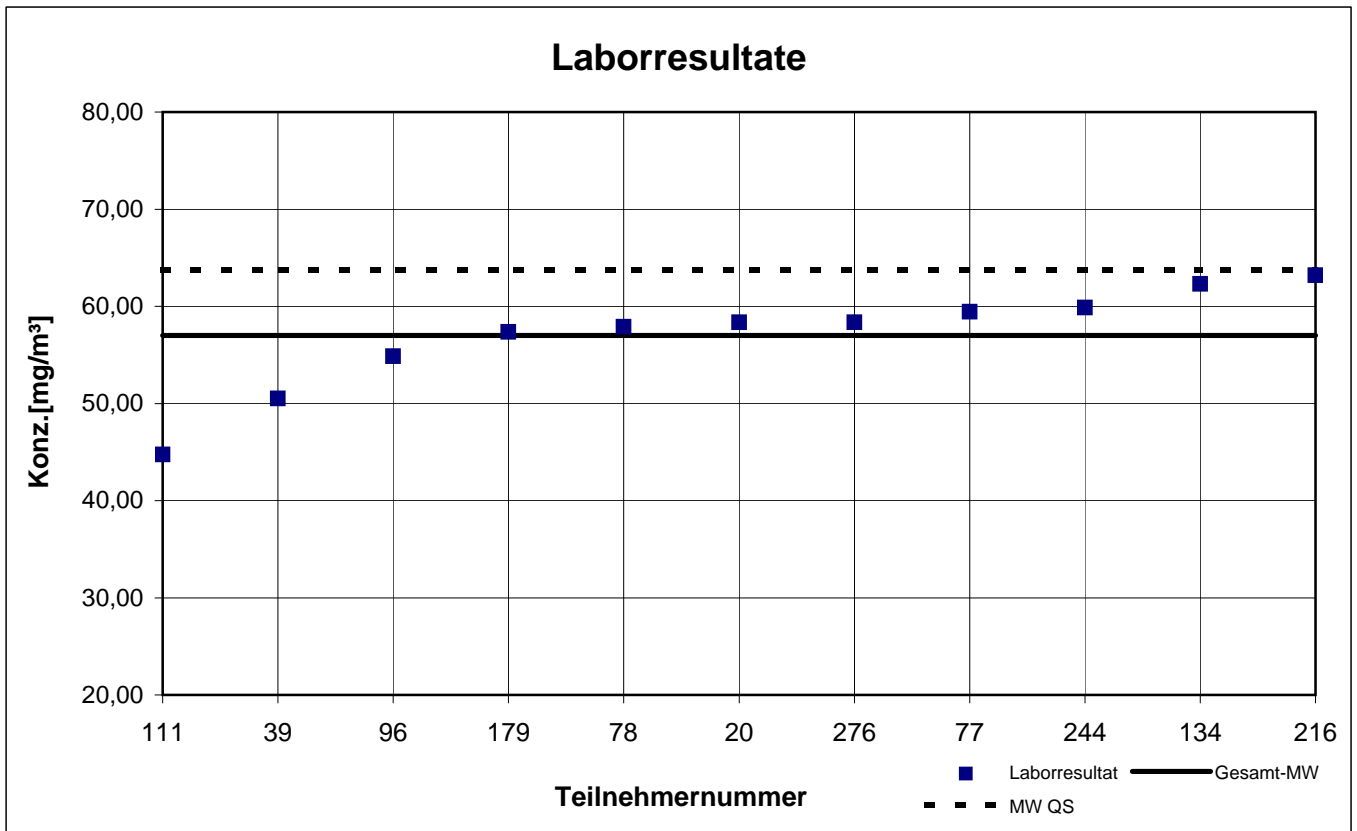
participant number	1-Methoxy-2-propanol		2-Butanol		2-Butoxyethanol		Ethanol	
	result [mg/m ³]	z - score	result [mg/m ³]	z - score	result [mg/m ³]	z - score	result [mg/m ³]	z - score
20	58,37	0,2	87,00	0,1	16,27	0,8	119,3	1,0
39	50,51	1,1	80,17	0,9	14,62	1,7	105,6	0,3
77	59,43	0,4	79,85	0,9	18,12	0,3	103,0	0,5
78	57,88	0,2	88,28	0,1	16,36	0,7	107,1	0,1
96	54,87	0,4	85,89	0,2	17,08	0,3	106,6	0,2
111	44,75	2,1	82,75	0,6	18,80	0,7	94,80	1,3
134	62,30	0,9	93,10	0,6	19,10	0,8	111,9	0,3
179	57,37	0,1	38,71	5,6	15,33	1,3	53,19	5,1
216	63,20	1,1	98,80	1,3	20,60	1,7	117,2	0,8
244	59,87	0,5	85,07	0,3	18,35	0,4	111,2	0,3
276	58,37	0,2	95,57	0,9	19,50	1,0	107,0	0,1

 marked fields are outliers!

	1-Methoxy-2-propanol	2-Butanol	2-Butoxy-ethanol	Ethanol
mean c_k [mg / m ³]	56,99	87,65	17,65	108,4
standard deviation S_k [mg/m ³]	5,311	6,395	1,864	7,042
relative standard deviation [%]	9,32	7,30	10,56	6,50
mean value of control samples [mg/m ³]	63,70	94,00	19,20	121,6

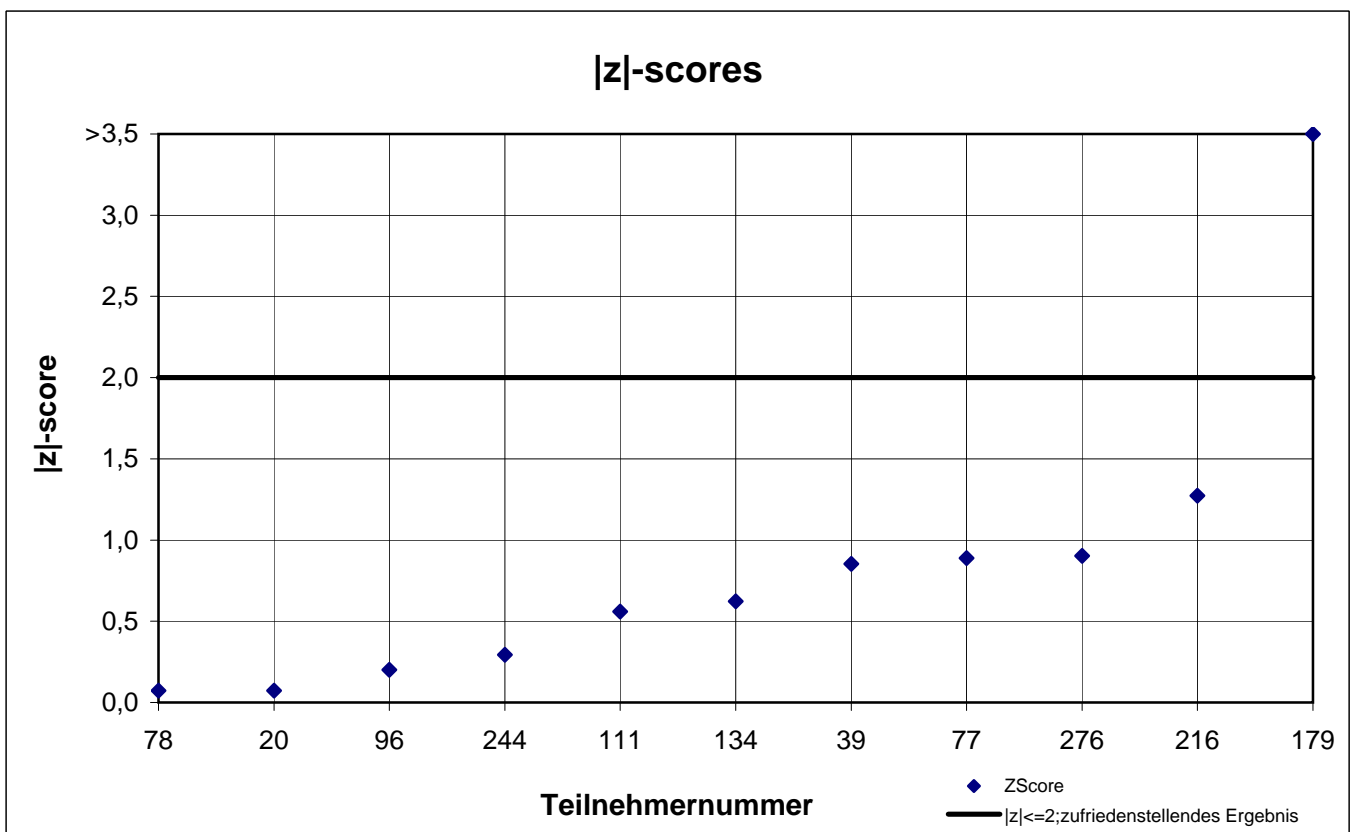
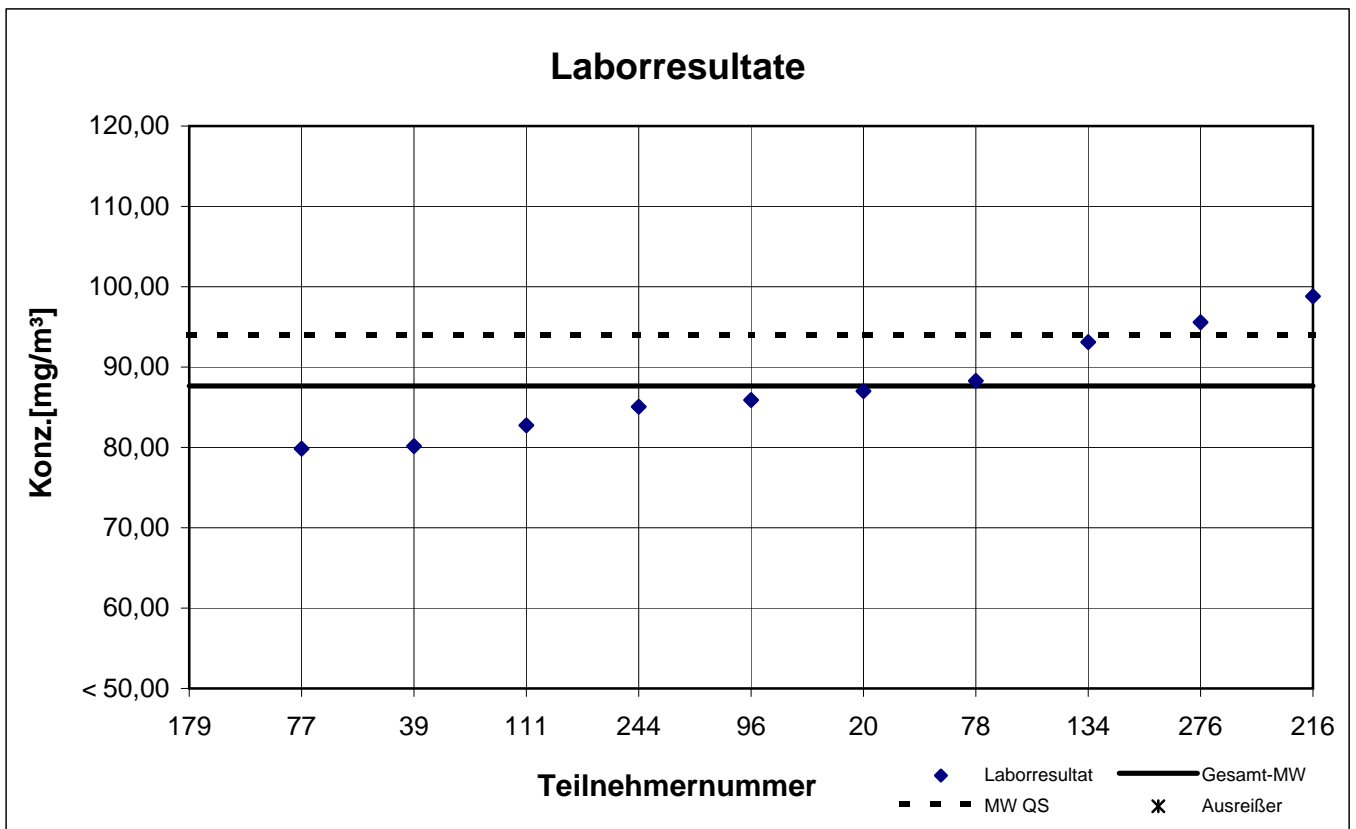
Probe 3

1-Methoxy-2-propanol



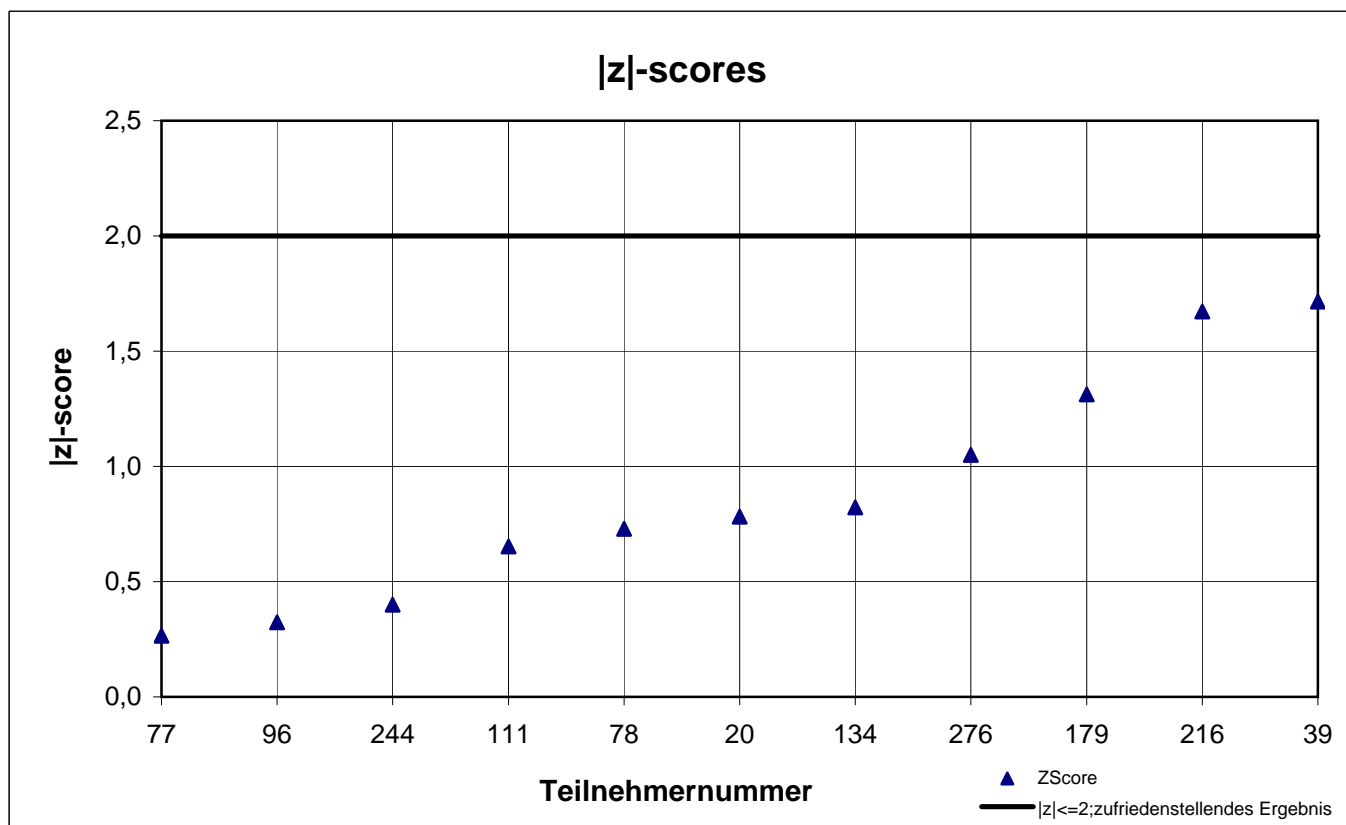
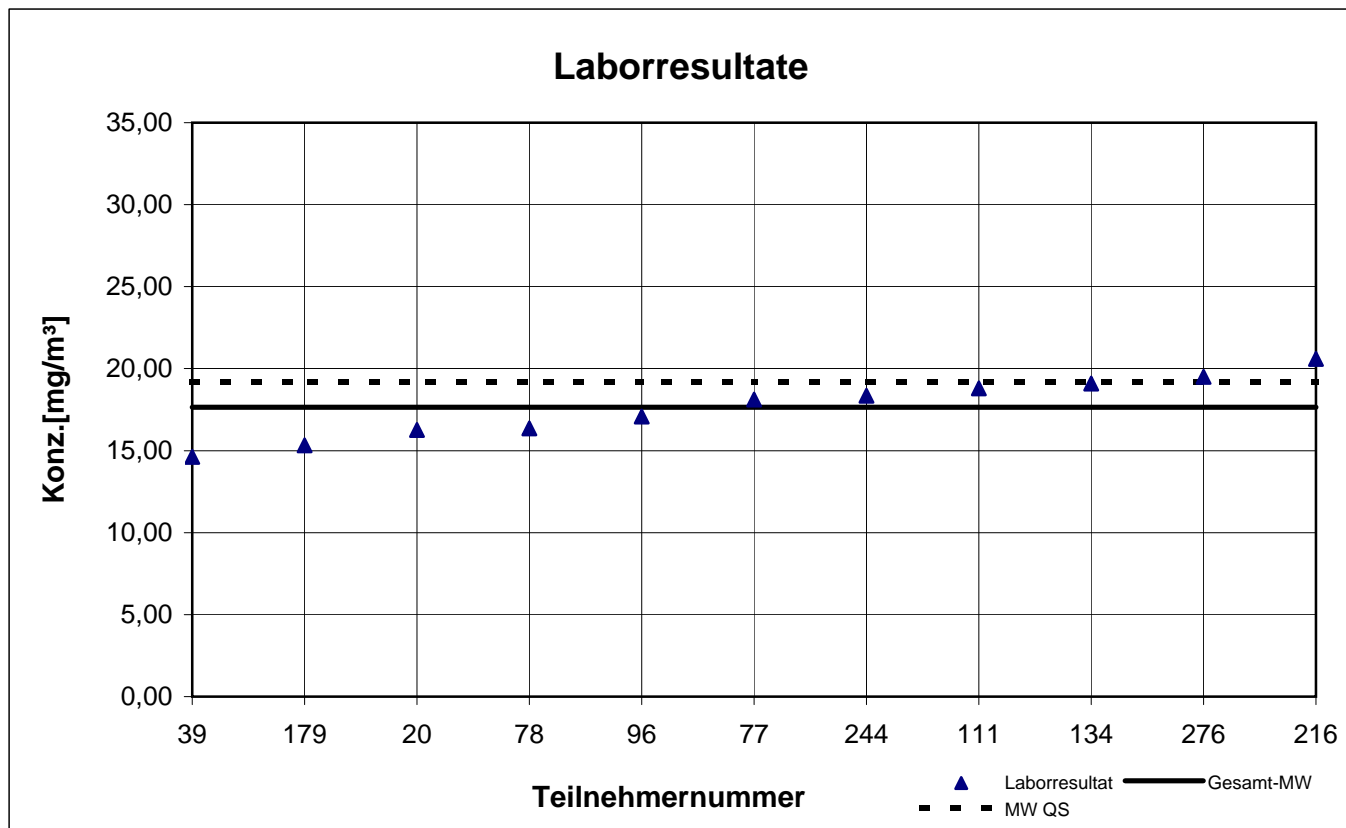
Probe 3

2-Butanol



Probe 3

2-Butoxyethanol



Probe 3

Ethanol

