

results NIOSH - sample 1

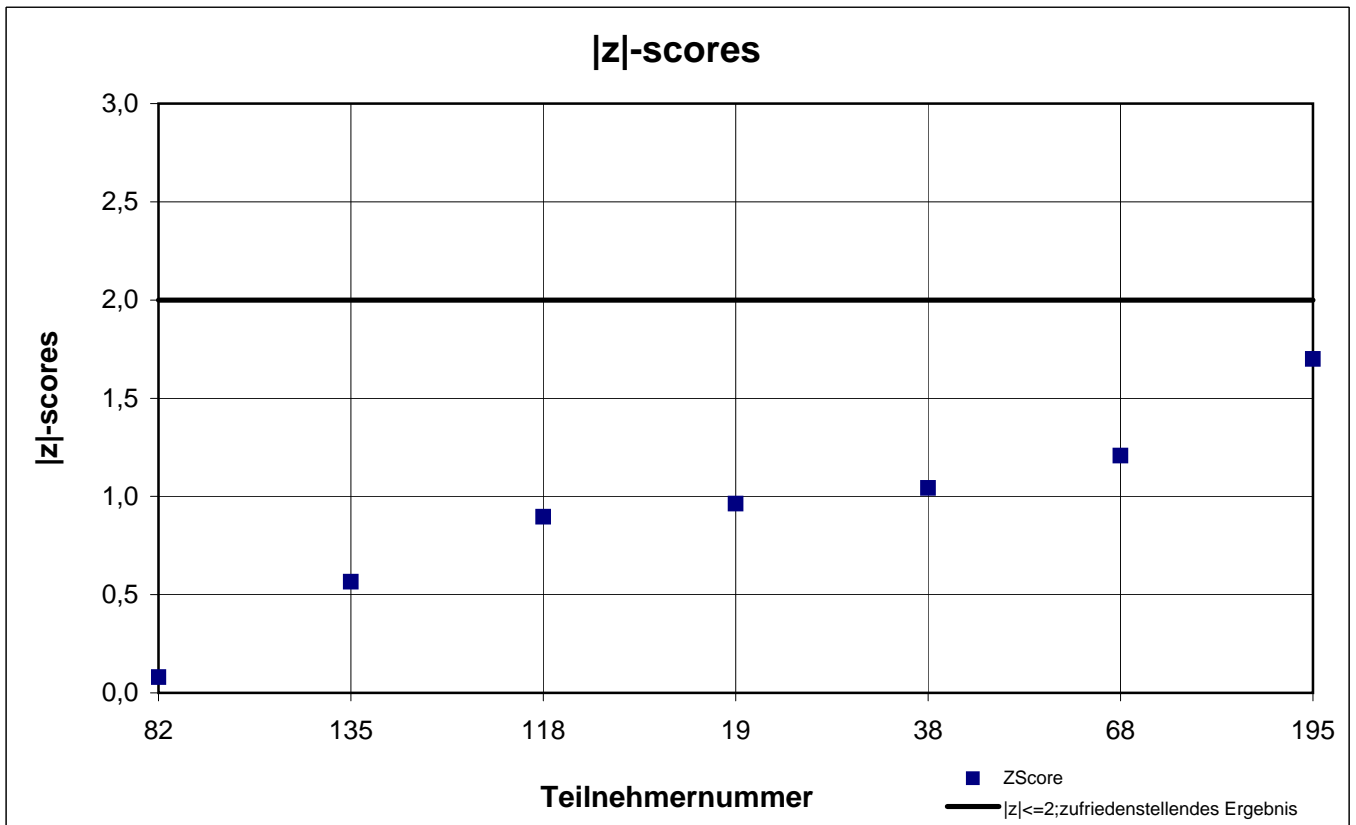
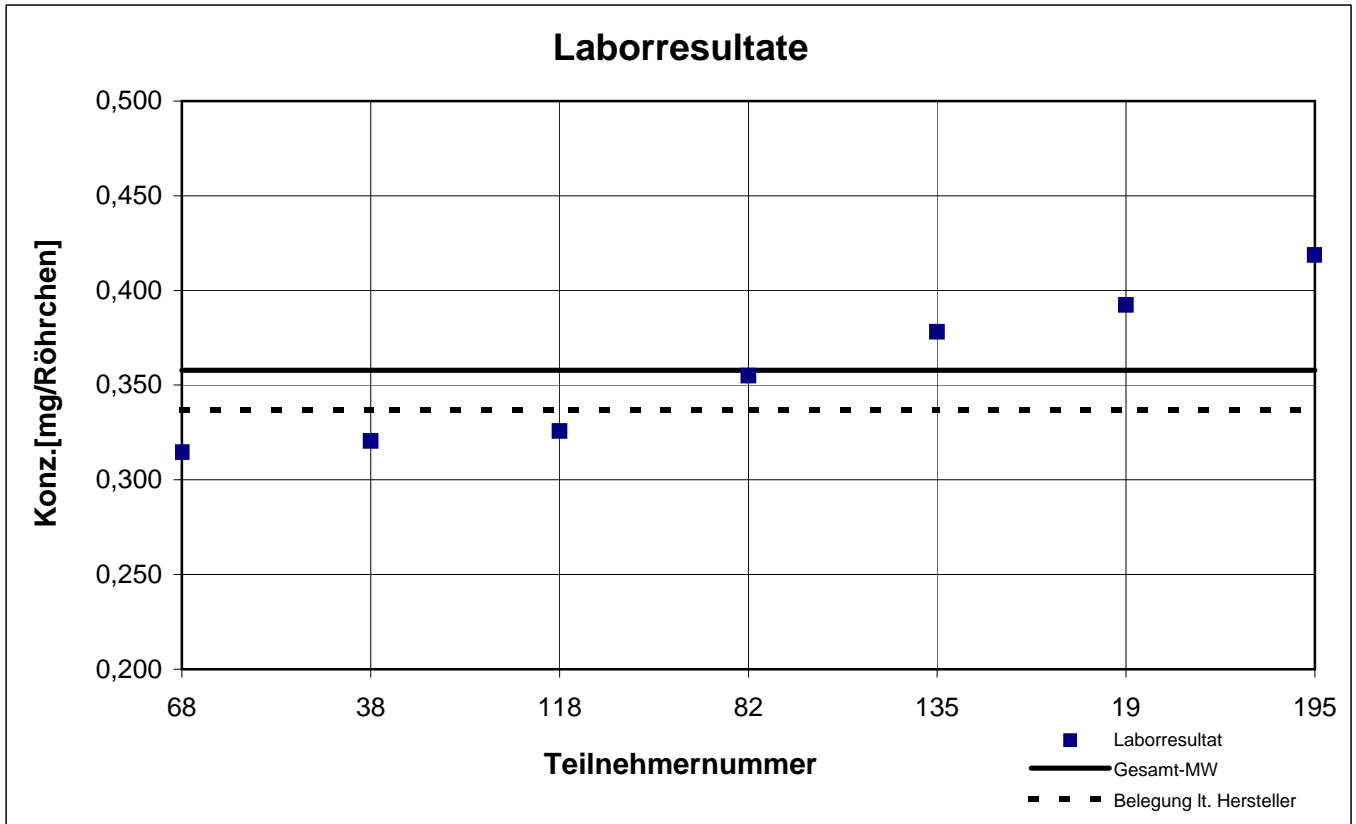
participant number	i-butylacetate		n-heptane		n-octane	
	result [mg/tube]	z - score	result [mg/tube]	z - score	result [mg/tube]	z - score
19	0,392	1,0	0,520	0,1	0,112	0,6
38	0,321	1,0	0,558	0,8	k.A.	k.A.
68	0,315	1,2	0,480	0,7	0,089	1,6
79	k.A.	k.A.	0,557	0,8	k.A.	k.A.
80	k.A.	k.A.	1,570	20,4	k.A.	k.A.
82	0,355	0,1	0,501	0,3	0,105	0,1
85	k.A.	k.A.	k.A.	k.A.	k.A.	k.A.
118	0,326	0,9	0,486	0,6	0,096	1,0
135	0,378	0,6	0,542	0,5	0,128	2,0
195	0,419	1,7	0,630	2,2	0,108	0,2
258	k.A.	k.A.	0,399	2,3	k.A.	k.A.
281	k.A.	k.A.	0,488	0,5	k.A.	k.A.

 marked fields are outliers!

	i-butyl acetate	n-heptane	n-octane
mean c_k [mg / tube]	0,358	0,516	0,106
standard deviation S_k [mg / tube]	0,0399	0,0614	0,0134
relative standard deviation [%]	11,17	11,90	12,69
mean value of control samples [mg / tube]	0,337	0,512	0,106

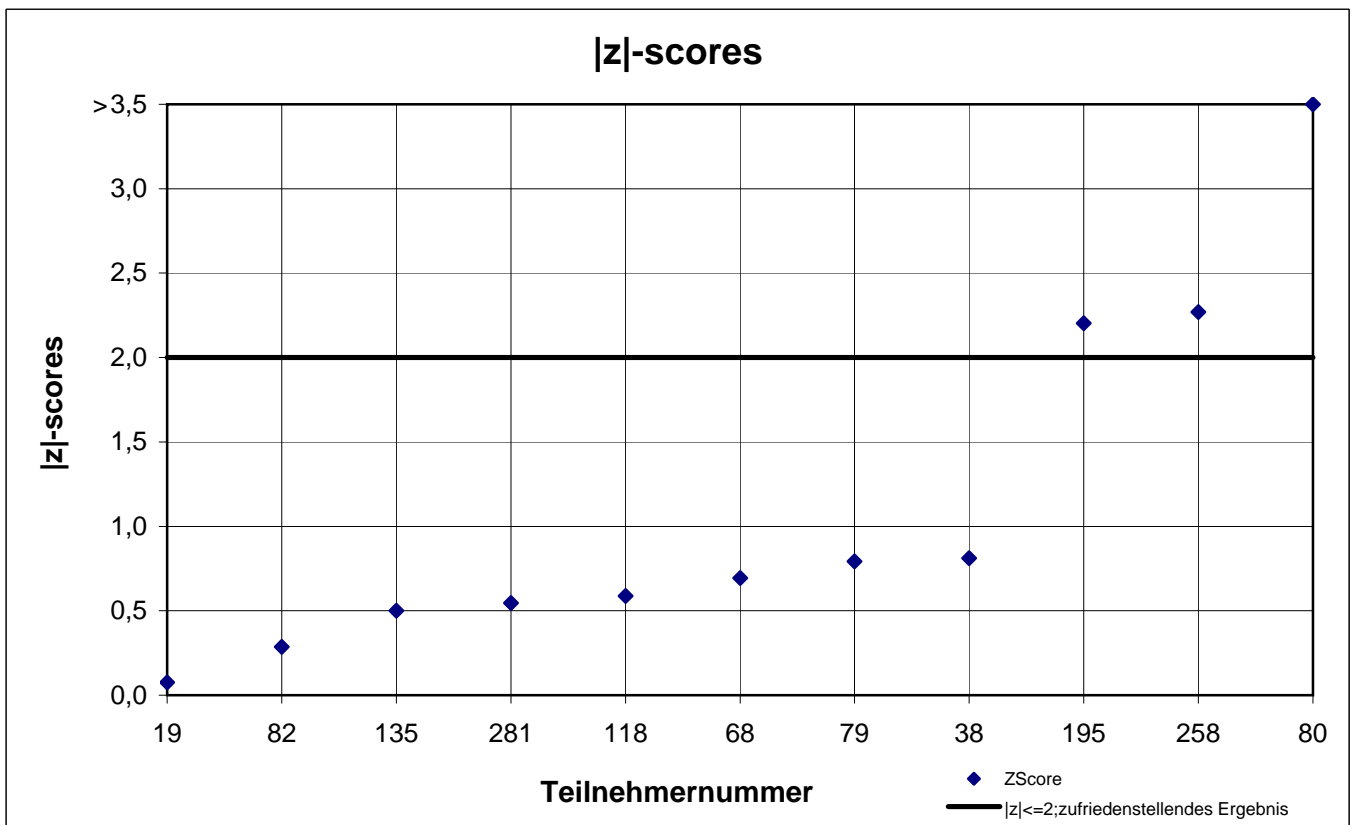
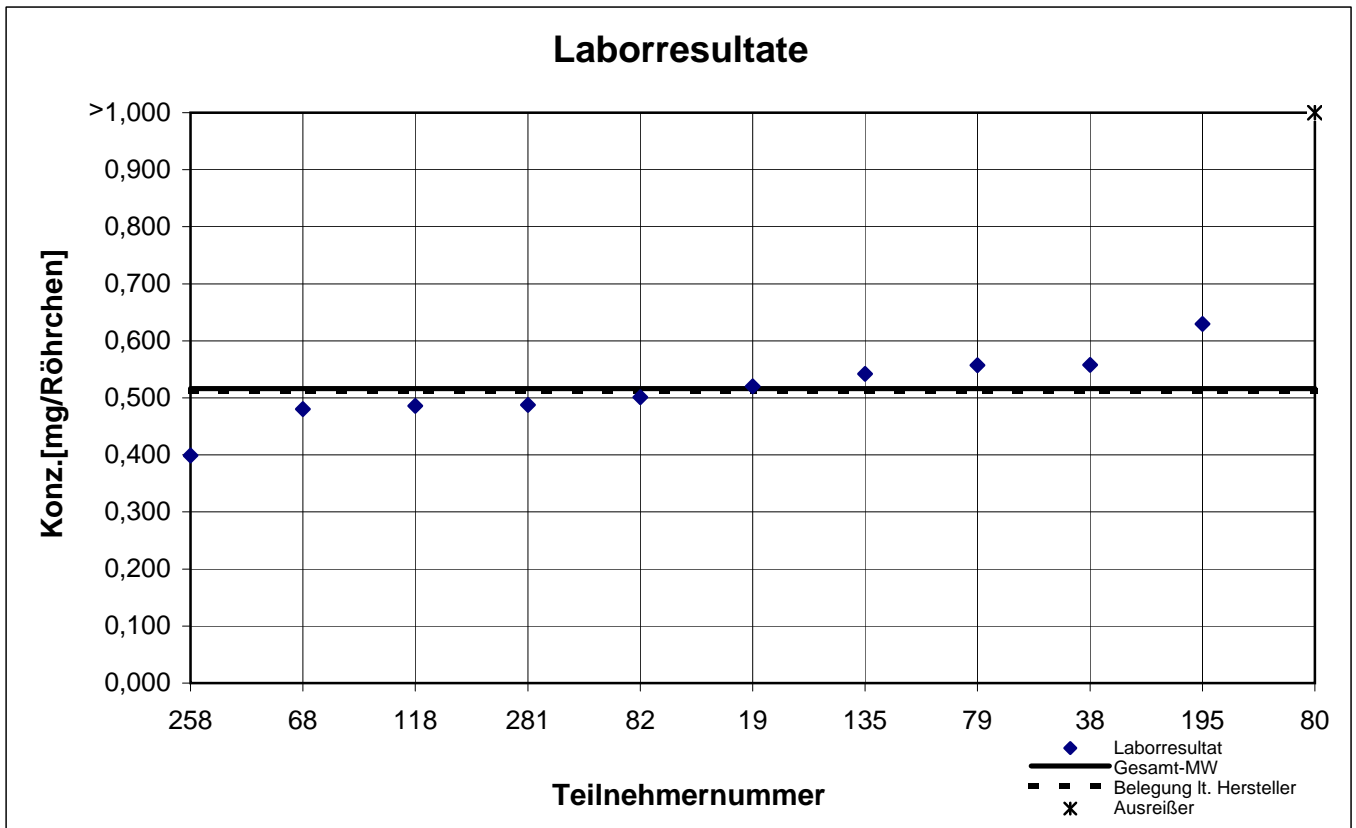
NIOSH -Probe 1

i-Butylacetat



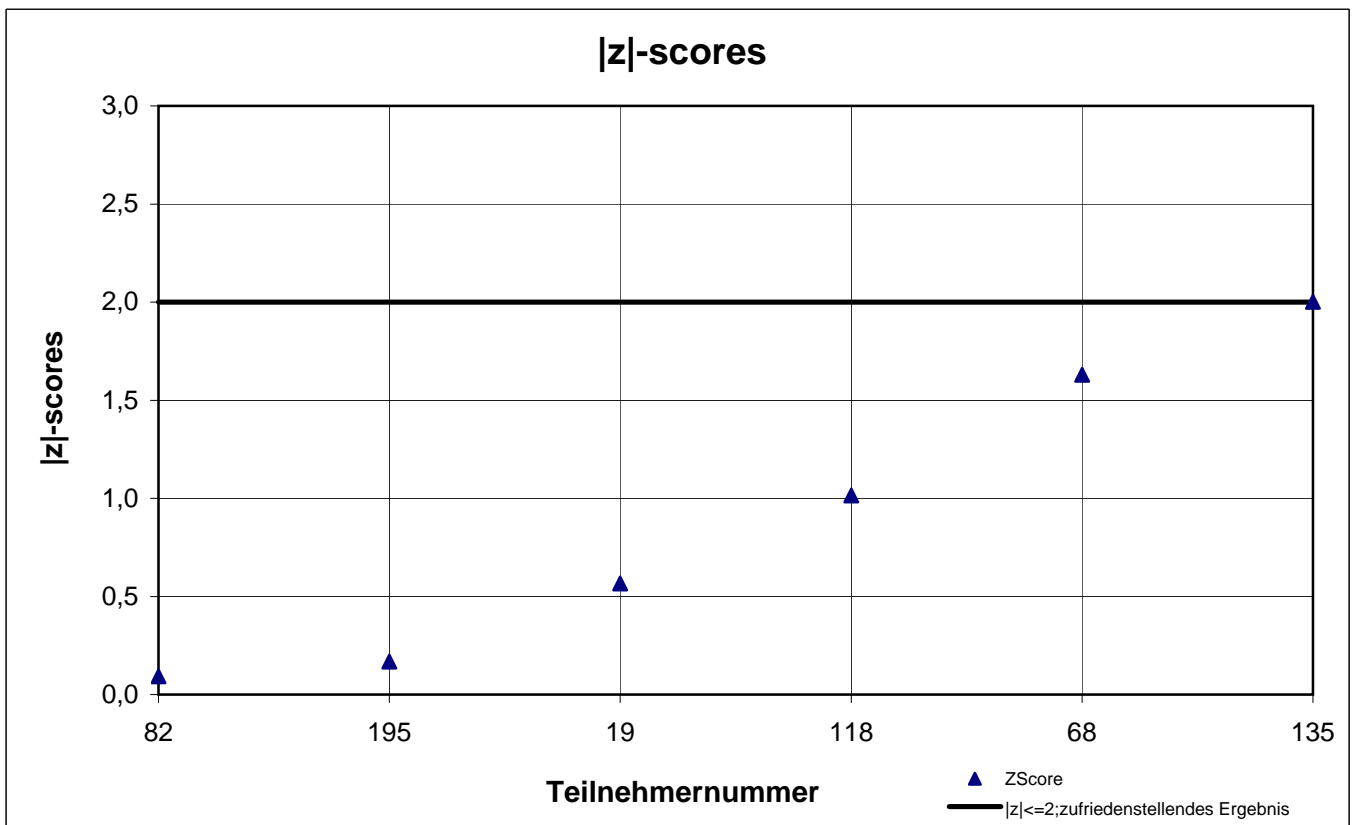
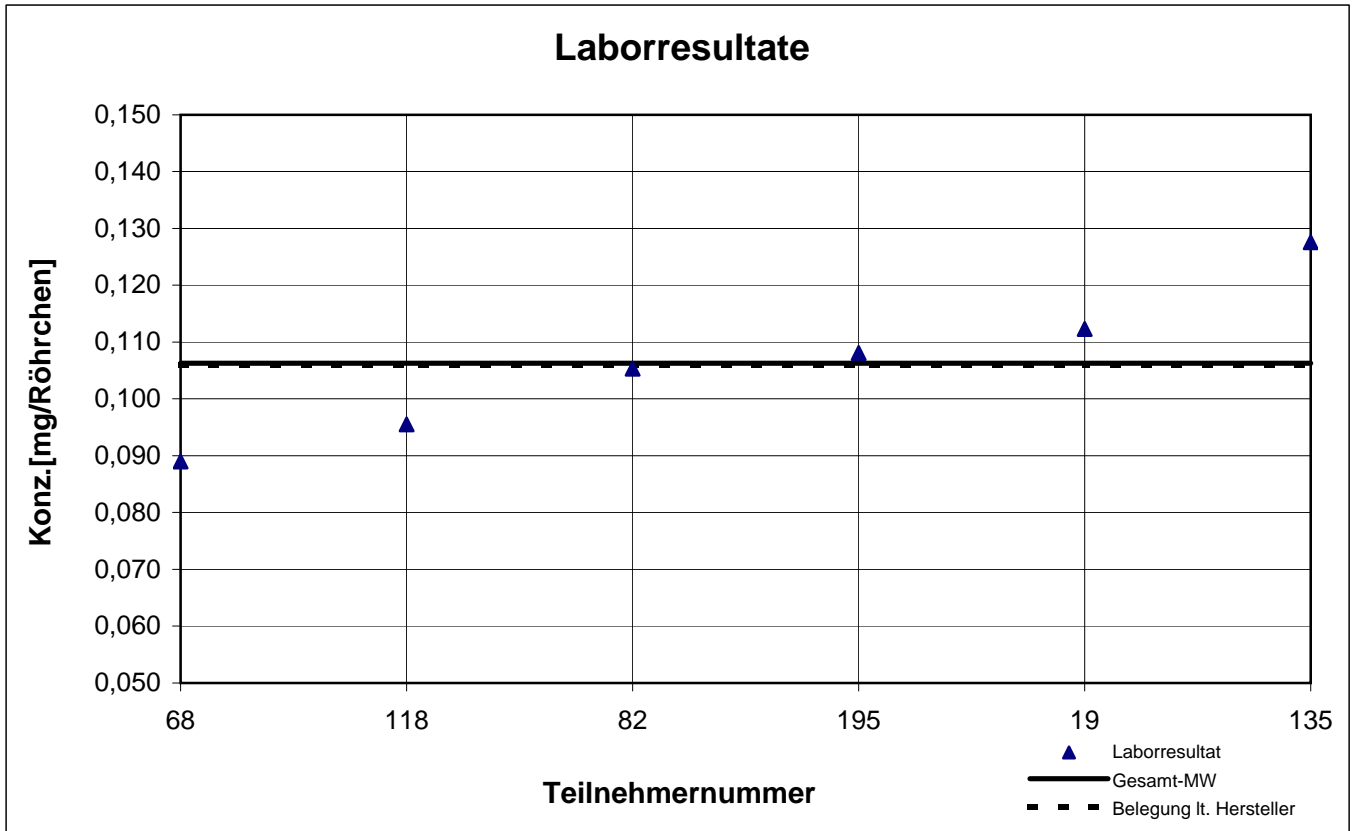
NIOSH -Probe 1

n-Heptan



NIOSH -Probe 1

n-Propylacetat



results NIOSH - sample 2

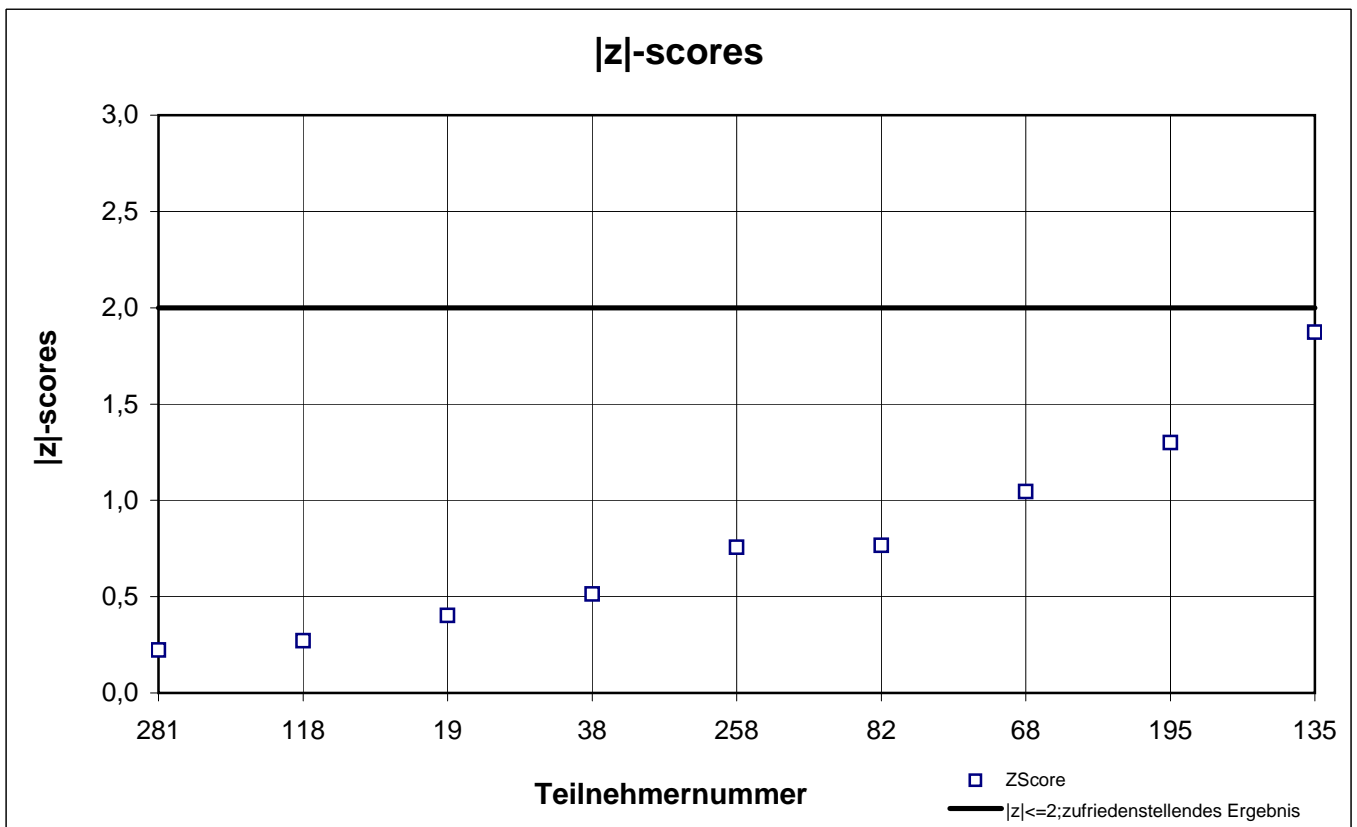
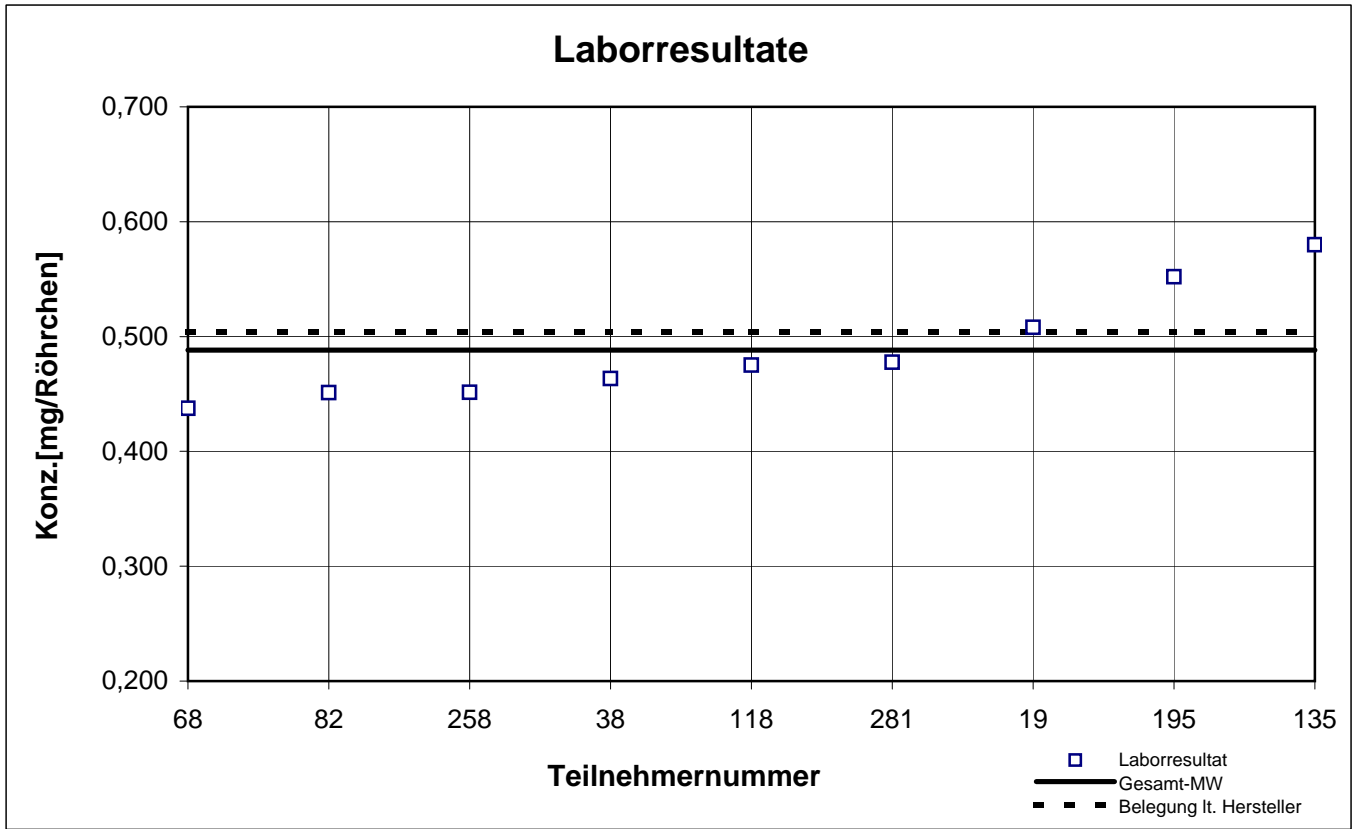
participant number	ethyl acetate		n-heptane		o-xylene		toluene	
	result [mg/tube]	z - score	result [mg/tube]	z - score	result [mg/tube]	z - score	result [mg/tube]	z - score
19	0,508	0,4	0,490	0,1	0,105	0,3	1,703	0,0
38	0,463	0,5	0,461	0,5	0,087	1,5	1,449	1,5
68	0,437	1,0	0,462	0,5	0,092	0,9	1,565	0,8
79	k.A.	k.A.	0,556	1,5	0,114	1,2	1,905	1,2
80	k.A.	k.A.	4,000	72,6	0,830	71,5	13,950	71,8
82	0,451	0,8	0,476	0,2	0,091	1,1	1,670	0,2
85	k.A.	k.A.	k.A.	k.A.	0,106	0,4	1,838	0,8
118	0,475	0,3	0,472	0,2	0,099	0,3	1,627	0,5
135	0,580	1,9	0,528	0,9	0,110	0,8	1,827	0,7
195	0,552	1,3	0,512	0,6	0,119	1,7	1,758	0,3
258	0,452	0,8	0,407	1,6	0,096	0,6	1,679	0,2
281	0,478	0,2	0,478	0,1	0,101	0,0	1,743	0,2

 marked fields are outliers!

	ethyl acetate	n-heptane	o-xylene	toluene
mean c_k [mg / tube]	0,488	0,484	0,102	1,706
standard deviation S_k [mg / tube]	0,0488	0,0411	0,0100	0,1303
relative standard deviation [%]	10,00	8,49	9,86	7,64
mean value of control samples [mg / tube]	0,504	0,495	0,102	1,722

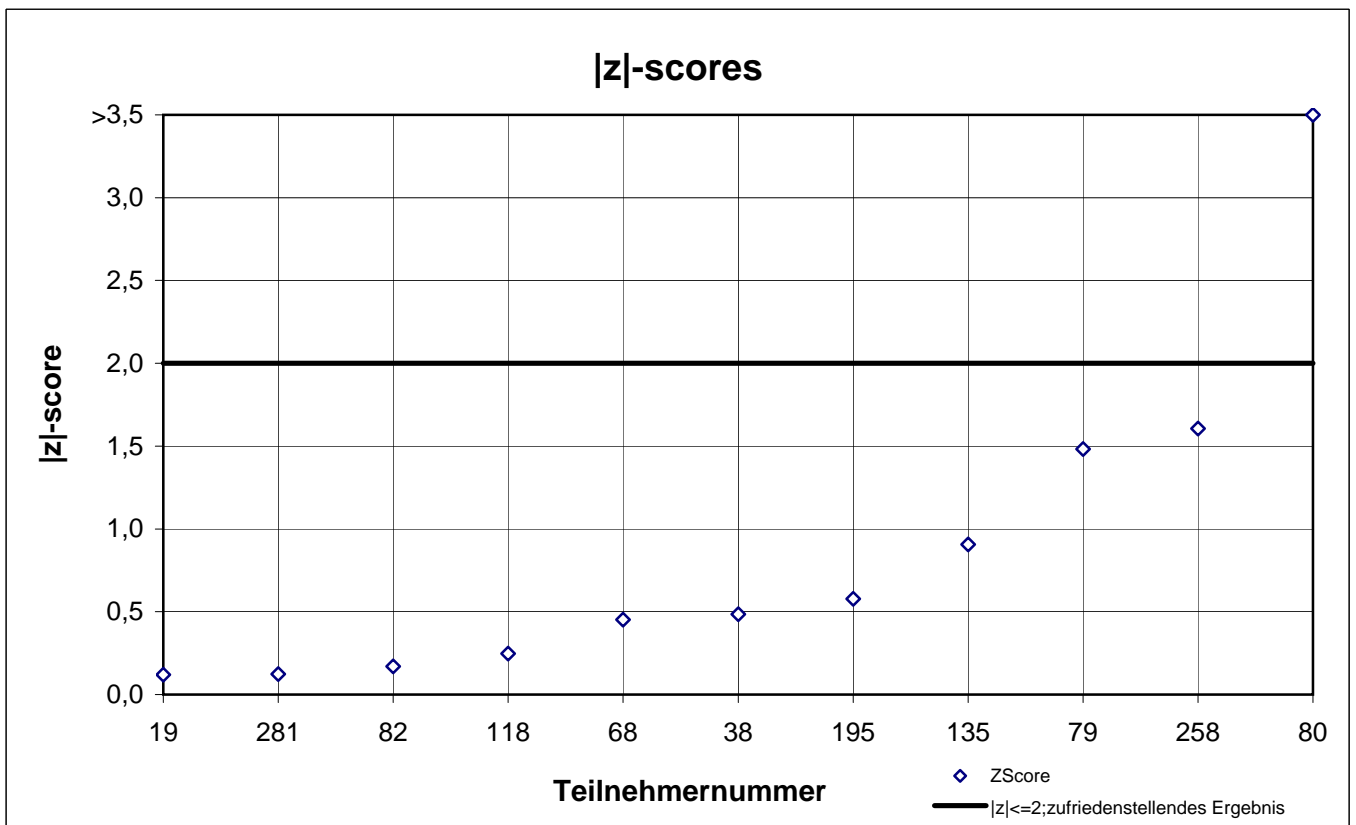
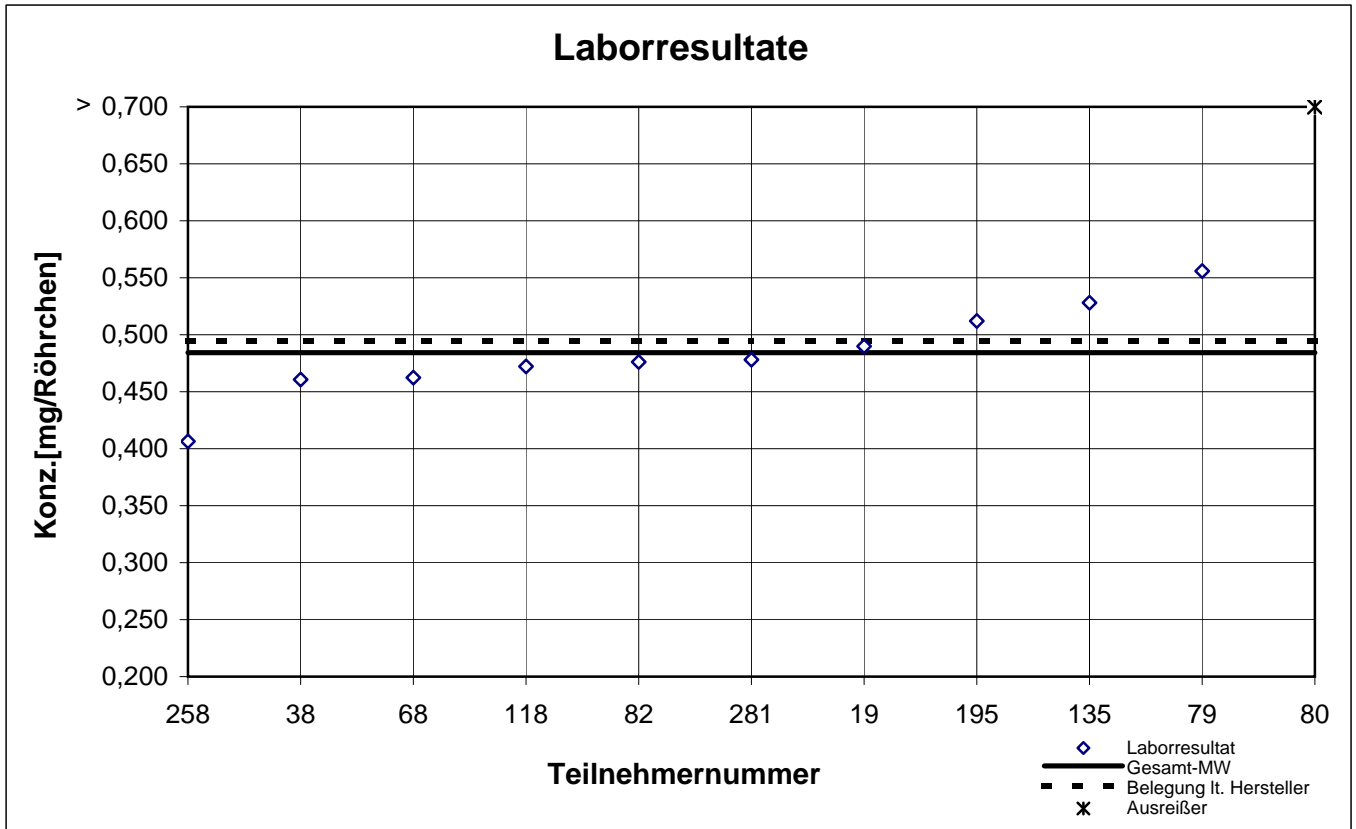
NIOSH -Probe 2

Ethylacetat



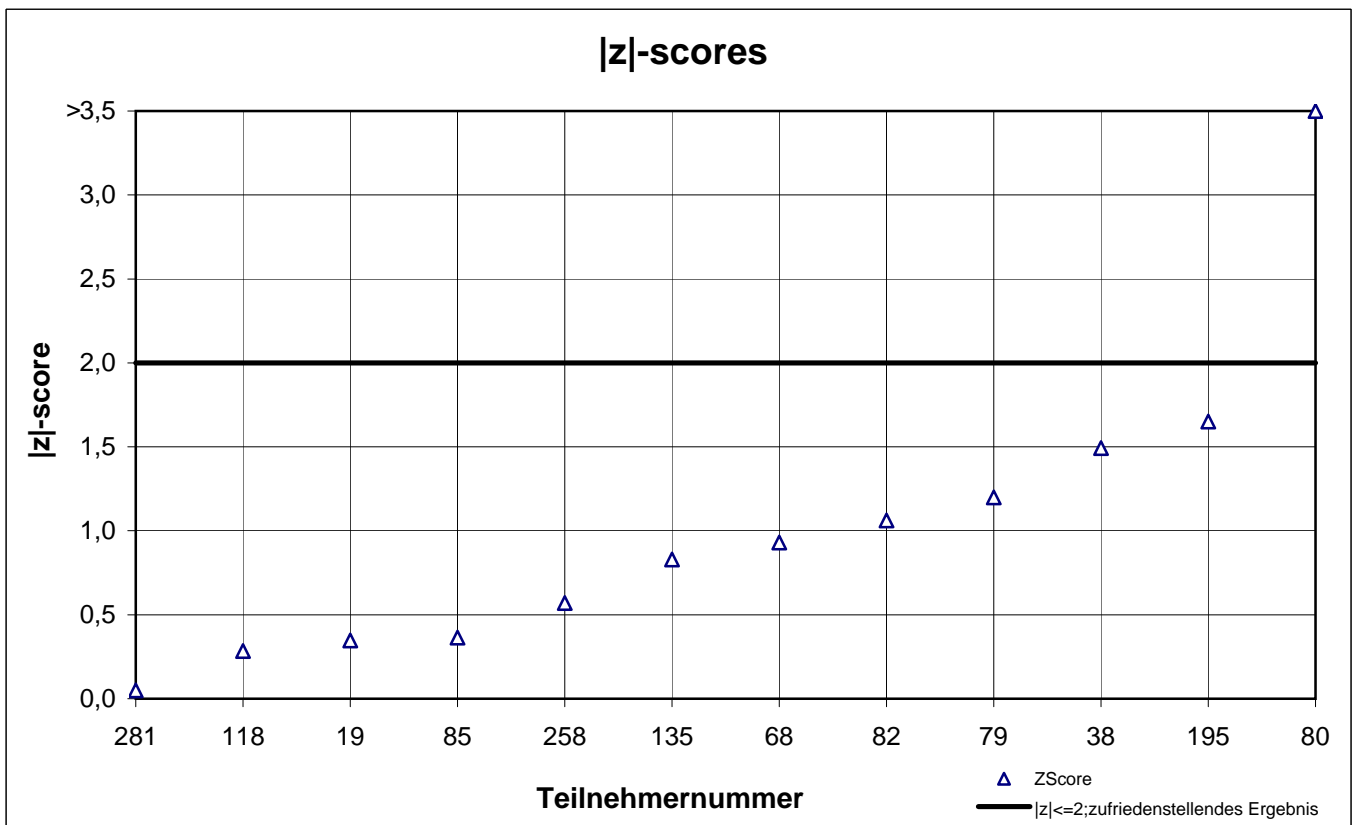
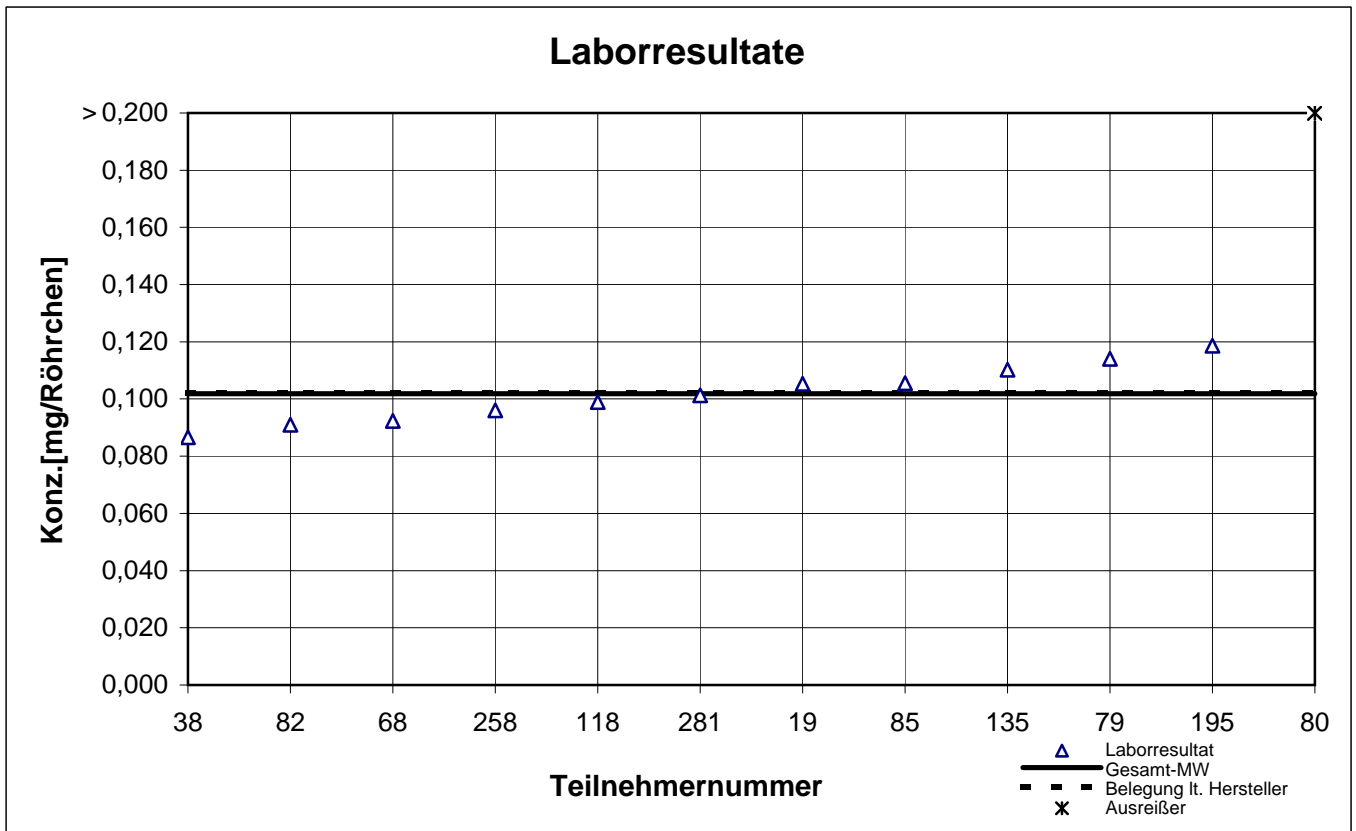
NIOSH -Probe 2

n-Heptan



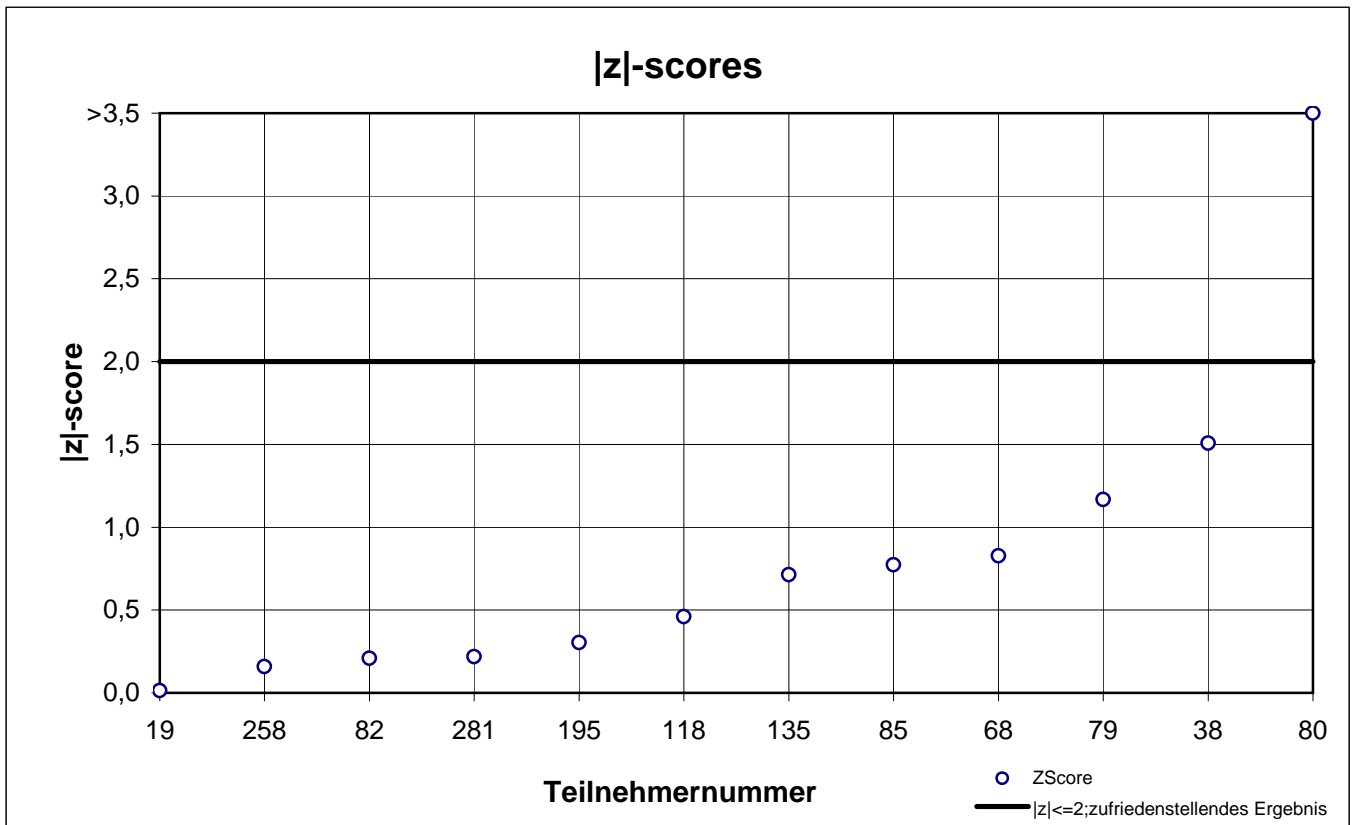
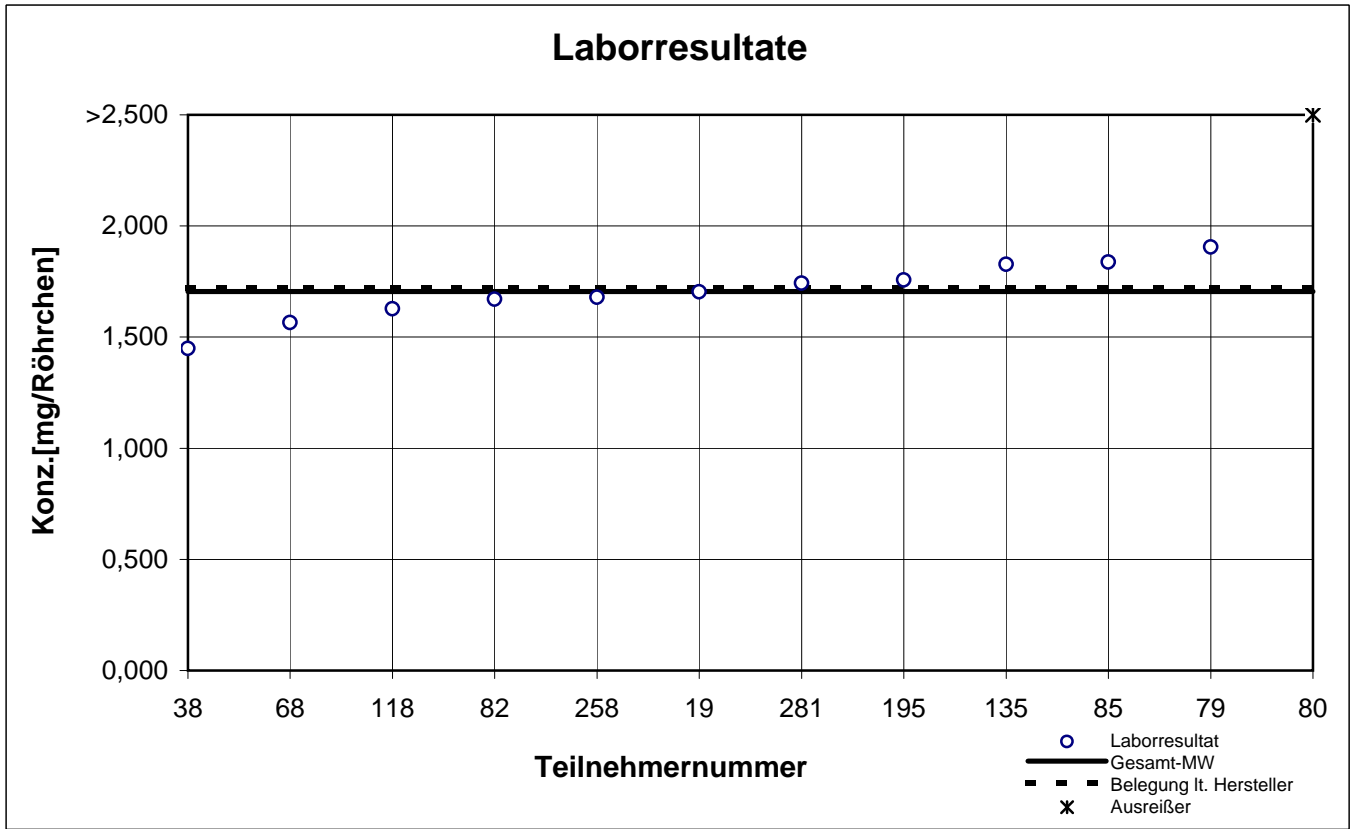
NIOSH -Probe 2

o-Xylol



NIOSH -Probe 2

Toluol



results NIOSH - sample 3

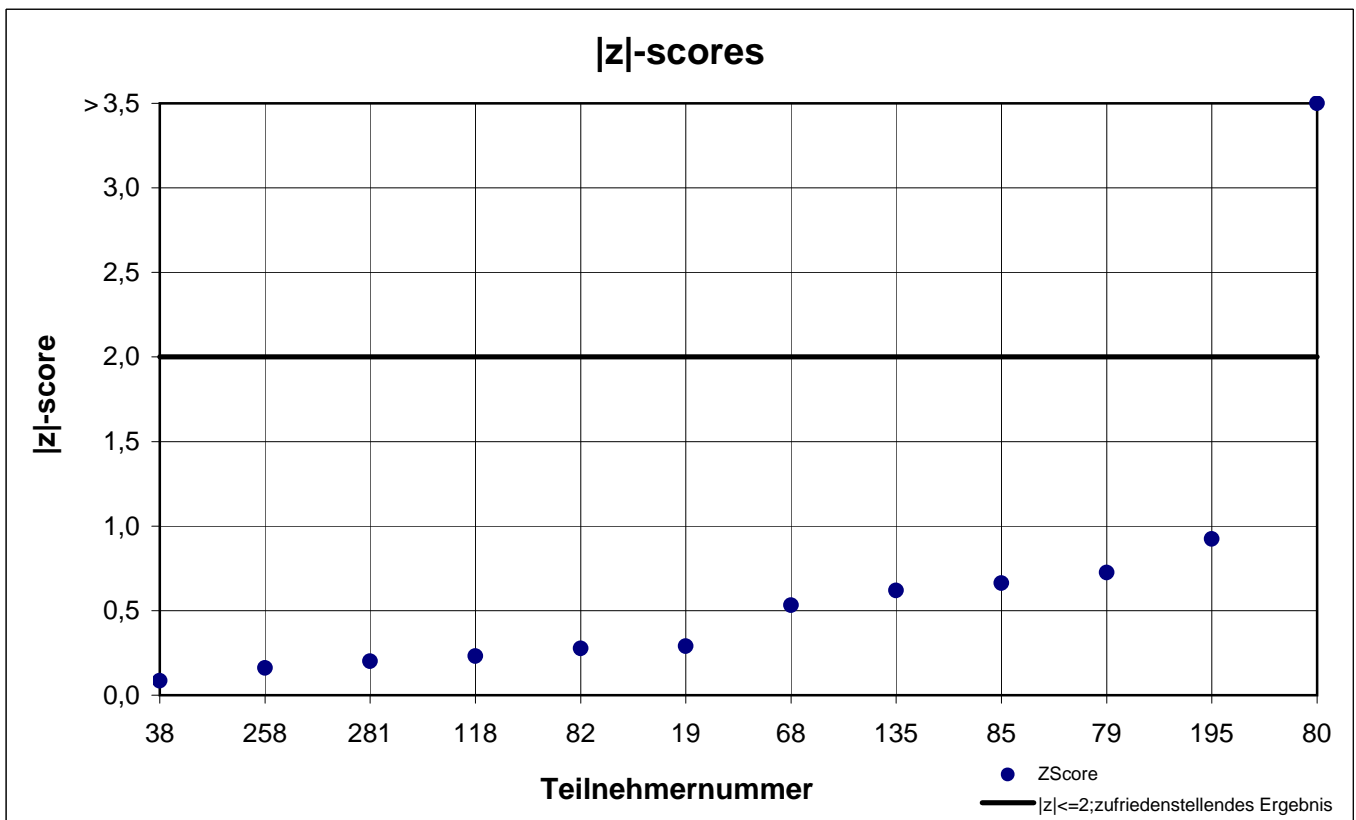
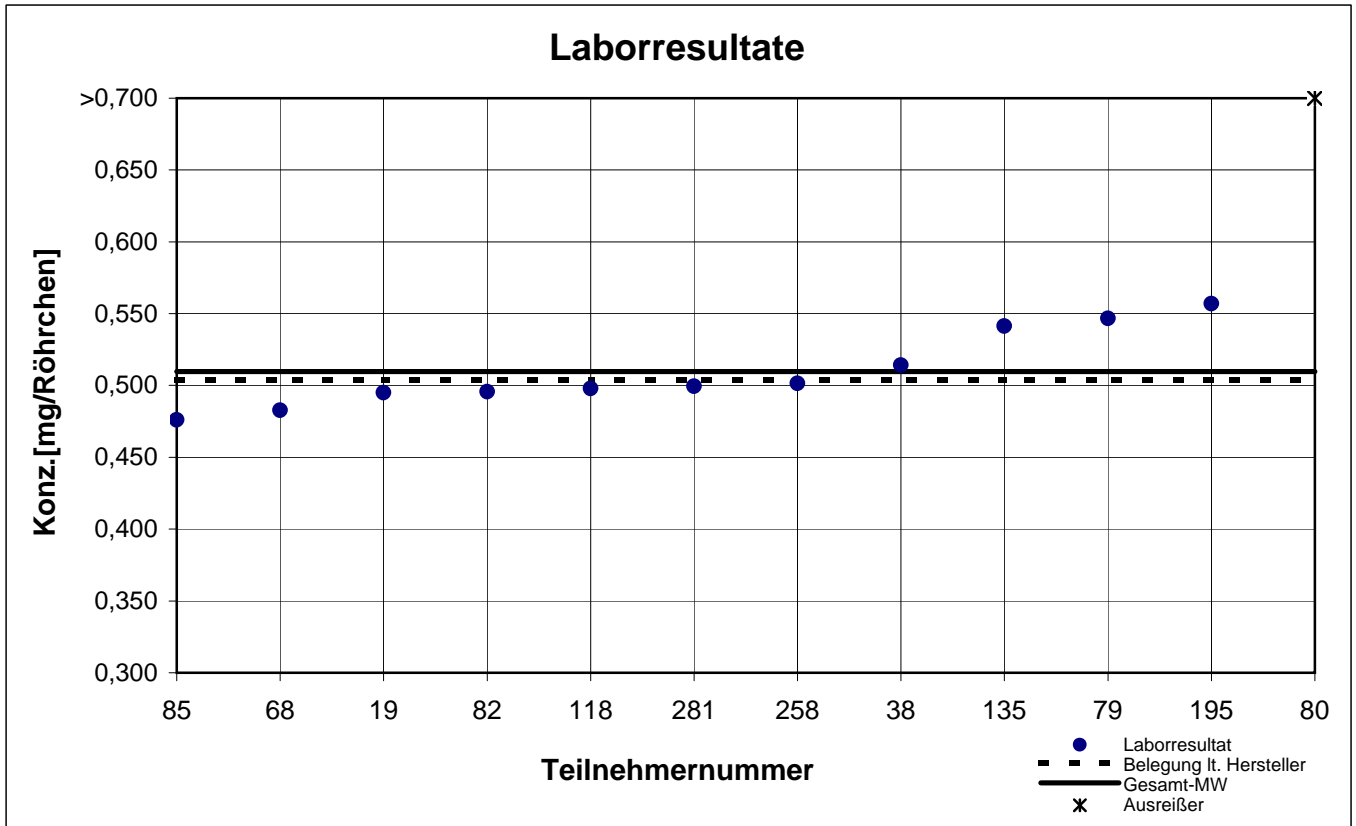
participant number	cyclohexane		ethylbenzene		n-octane	
	result [mg/tube]	z - score	result [mg/tube]	z - score	result [mg/tube]	z - score
19	0,495	0,3	0,160	0,5	0,508	1,0
38	0,514	0,1	0,143	0,7	0,462	0,0
68	0,483	0,5	0,143	0,7	0,444	0,4
79	0,547	0,7	0,154	0,1	0,491	0,6
80	4,370	75,7	1,280	73,6	3,870	73,8
82	0,496	0,3	0,145	0,6	0,468	0,1
85	0,476	0,7	0,153	0,0	k.A.	k.A.
118	0,498	0,2	0,143	0,7	0,434	0,6
135	0,541	0,6	0,163	0,7	0,495	0,7
195	0,557	0,9	0,168	1,0	0,468	0,1
258	0,502	0,2	0,151	0,2	0,401	1,3
281	0,500	0,2	0,162	0,6	0,448	0,3

 marked fields are outliers!

	cyclohexane	ethyl benzene	n-octane
mean c_k [mg / tube]	0,510	0,153	0,462
standard deviation S_k [mg / tube]	0,0268	0,0092	0,0320
relative standard deviation [%]	5,26	6,05	6,94
mean value of control samples [mg / tube]	0,504	0,150	0,462

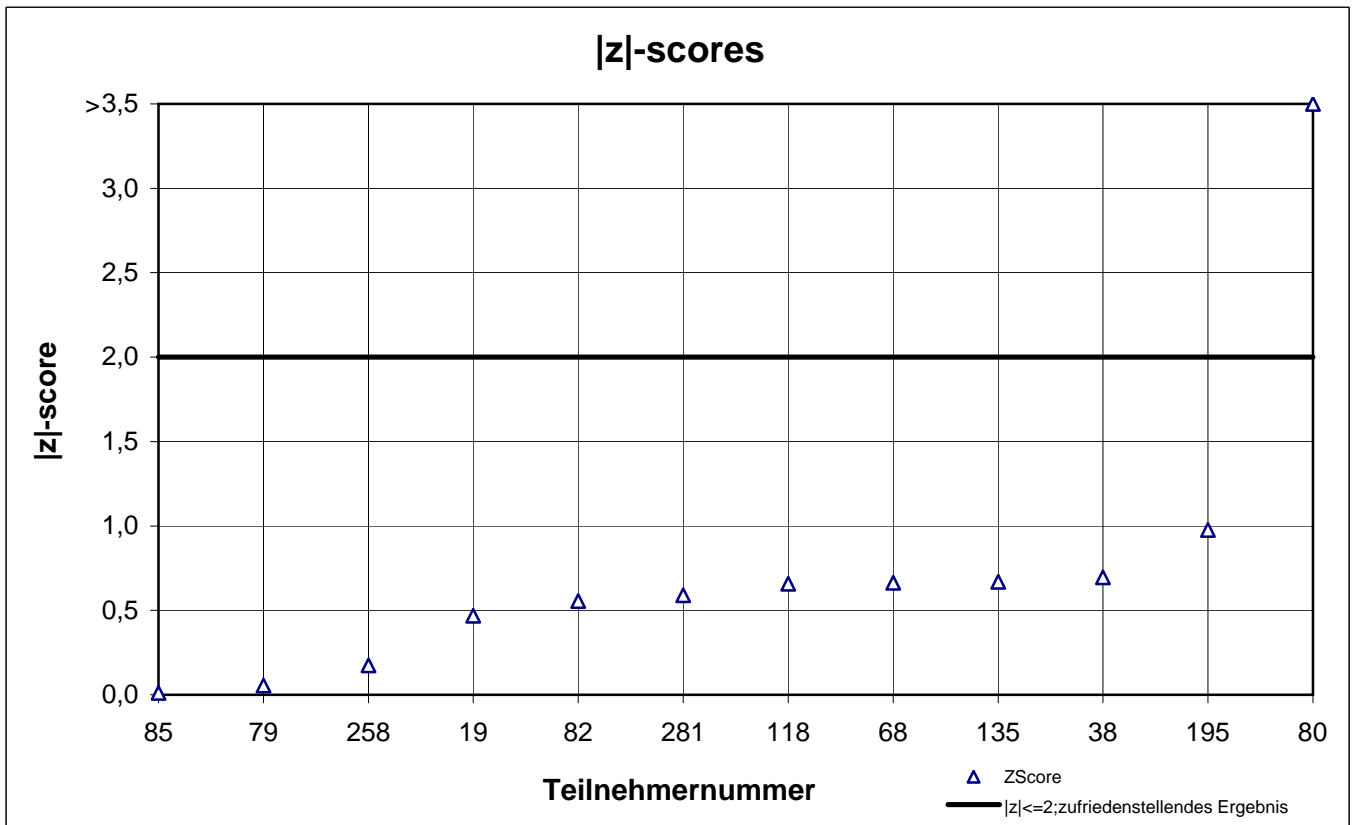
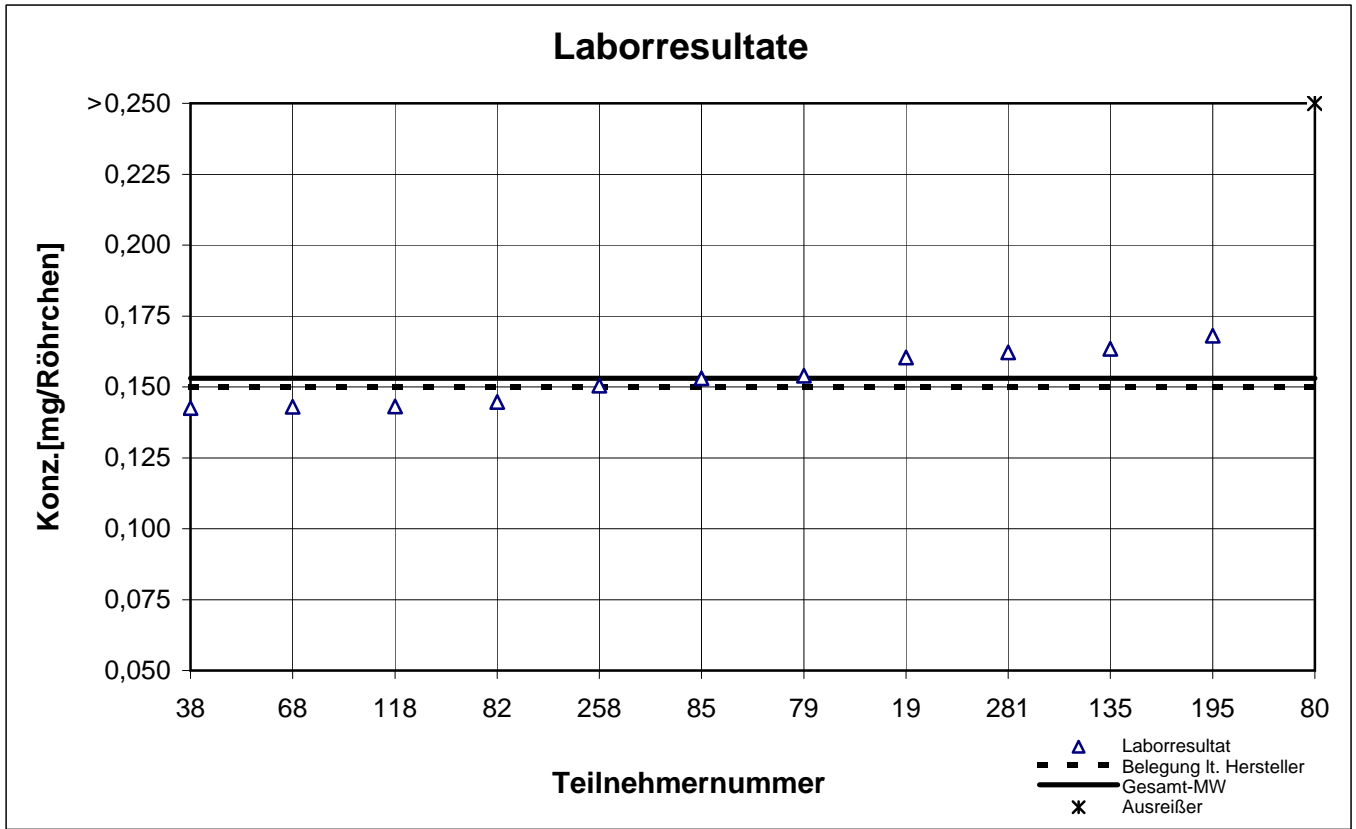
NIOSH -Probe 3

Cyclohexan



NIOSH -Probe 3

Ethylbenzol



NIOSH -Probe 3

n-Oktan

