

results NIOSH - sample 1

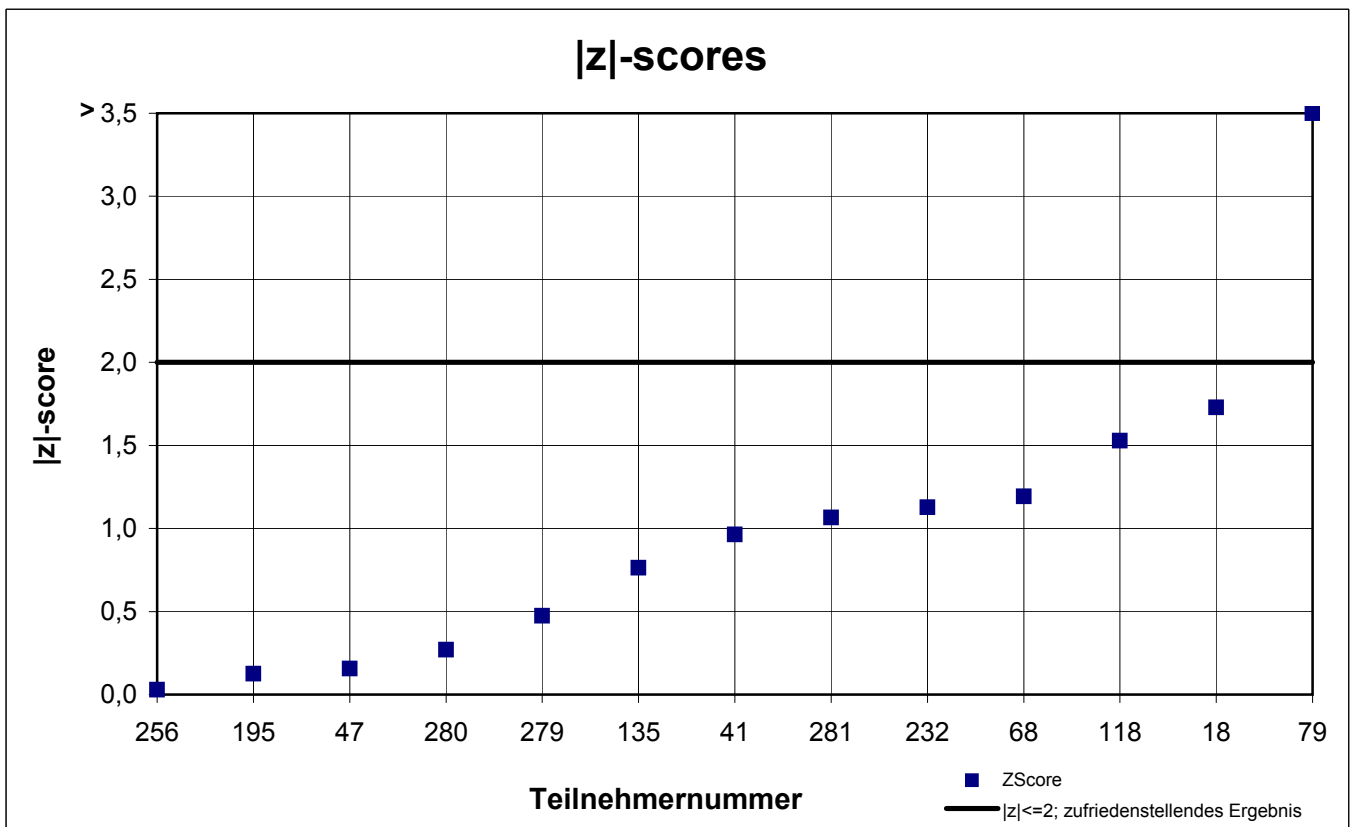
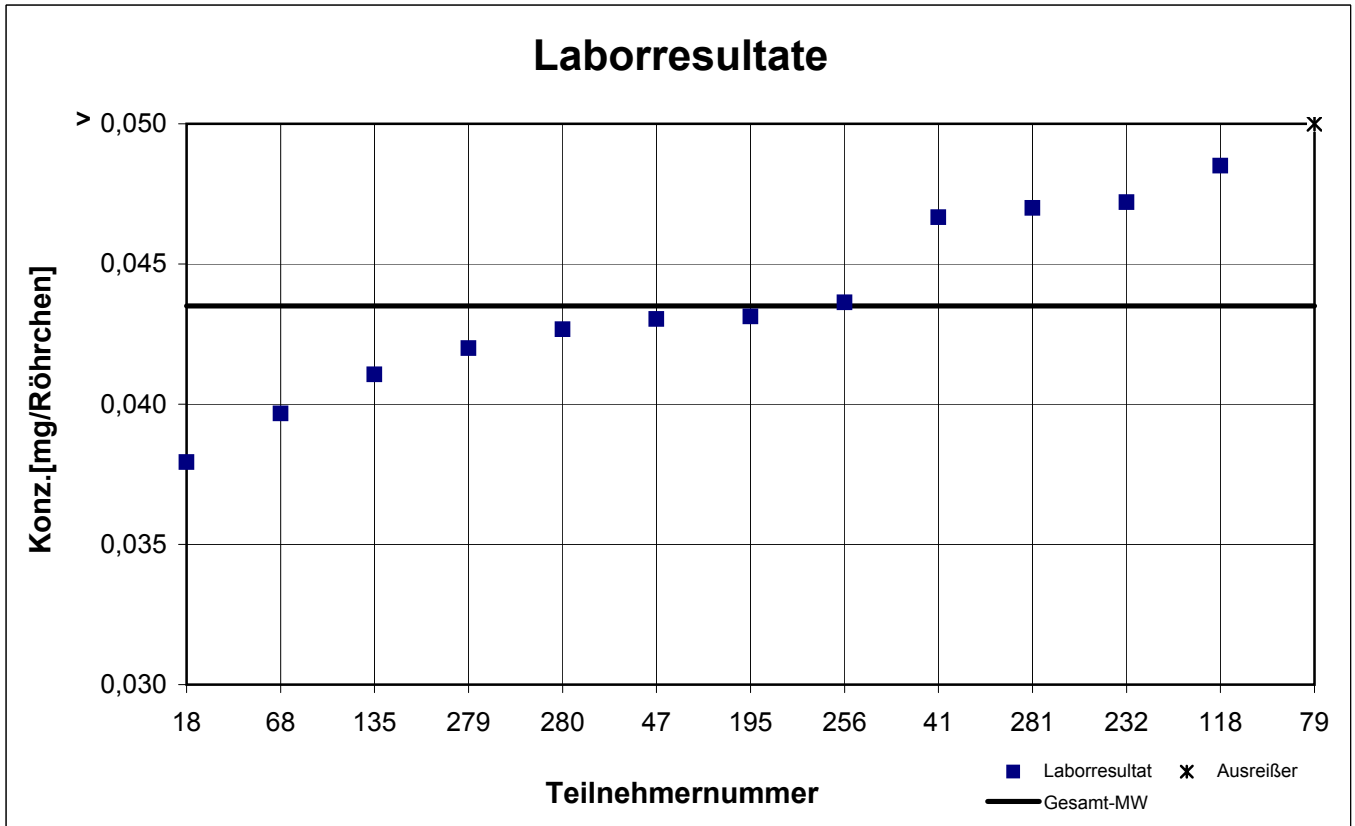
participant number	ethylbenzene		m/p-xylene		tetrachloroethylene	
	result [mg/tube]	z - score	result [mg/tube]	z - score	result [mg/tube]	z - score
18	0,0379	1,7	0,135	0,9	0,262	0,7
41	0,0467	1,0	0,162	0,9	0,280	0,2
47	0,0430	0,2	0,121	1,8	0,249	1,3
68	0,0397	1,2	0,146	0,1	0,279	0,1
79	0,0816	11,7	0,134	1,0	k.A.	k.A.
118	0,0485	1,5	0,167	1,2	0,309	1,6
135	0,0411	0,8	0,136	0,9	0,255	1,0
195	0,0431	0,1	0,149	0,0	0,251	1,2
232	0,0472	1,1	0,162	0,9	0,293	0,8
256	0,0436	0,0	0,164	1,1	k.A.	k.A.
279	0,0420	0,5	0,144	0,3	0,271	0,3
280	0,0427	0,3	0,071	5,2	0,293	0,8
281	0,0470	1,1	0,161	0,8	0,301	1,2

marked fields are outliers!

	ethyl benzene	m/p-xylene	tetrachloro ethylene
mean c_k [mg / tube]	0,044	0,148	0,277
standard deviation S_k [mg / tube]	0,0032	0,0148	0,0208
relative standard deviation [%]	7,45	10,01	7,52

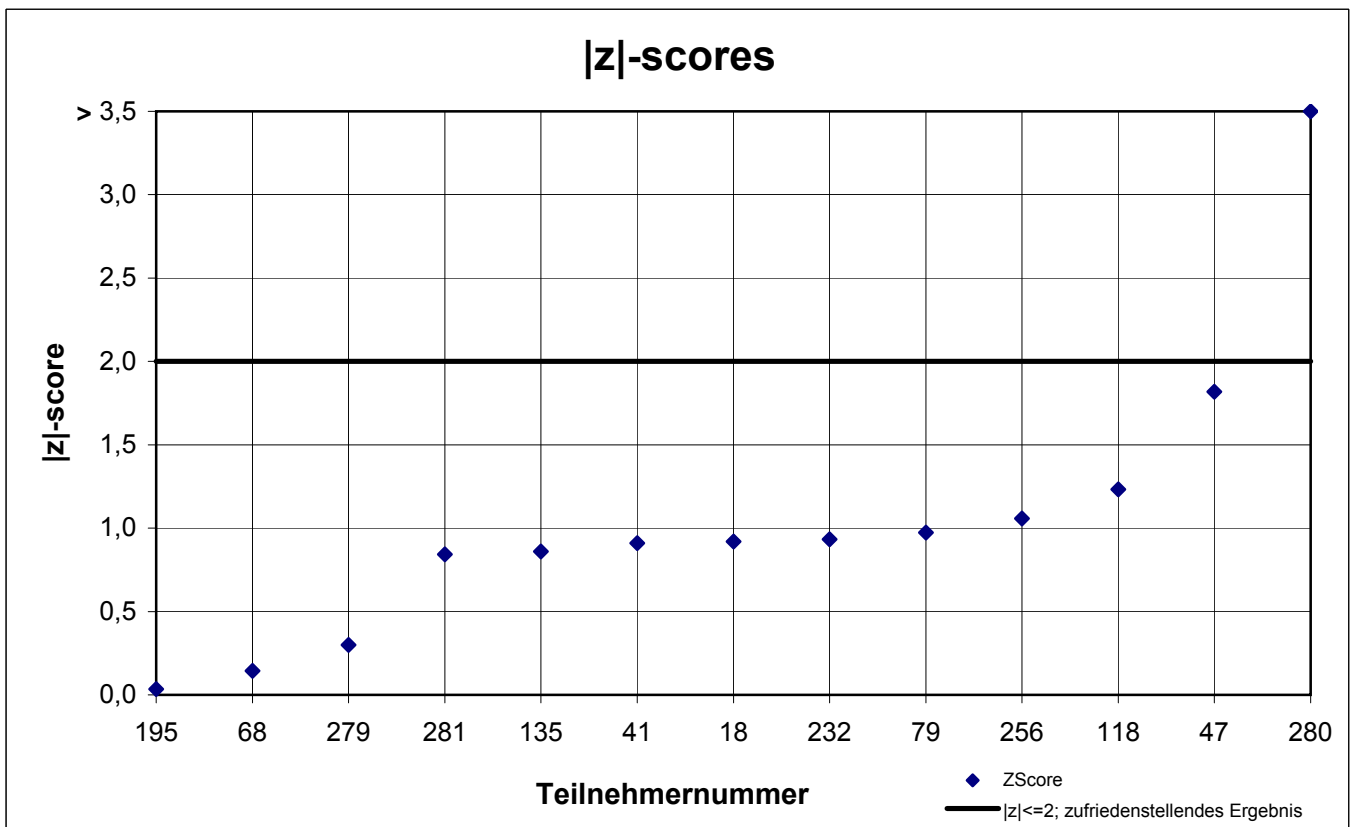
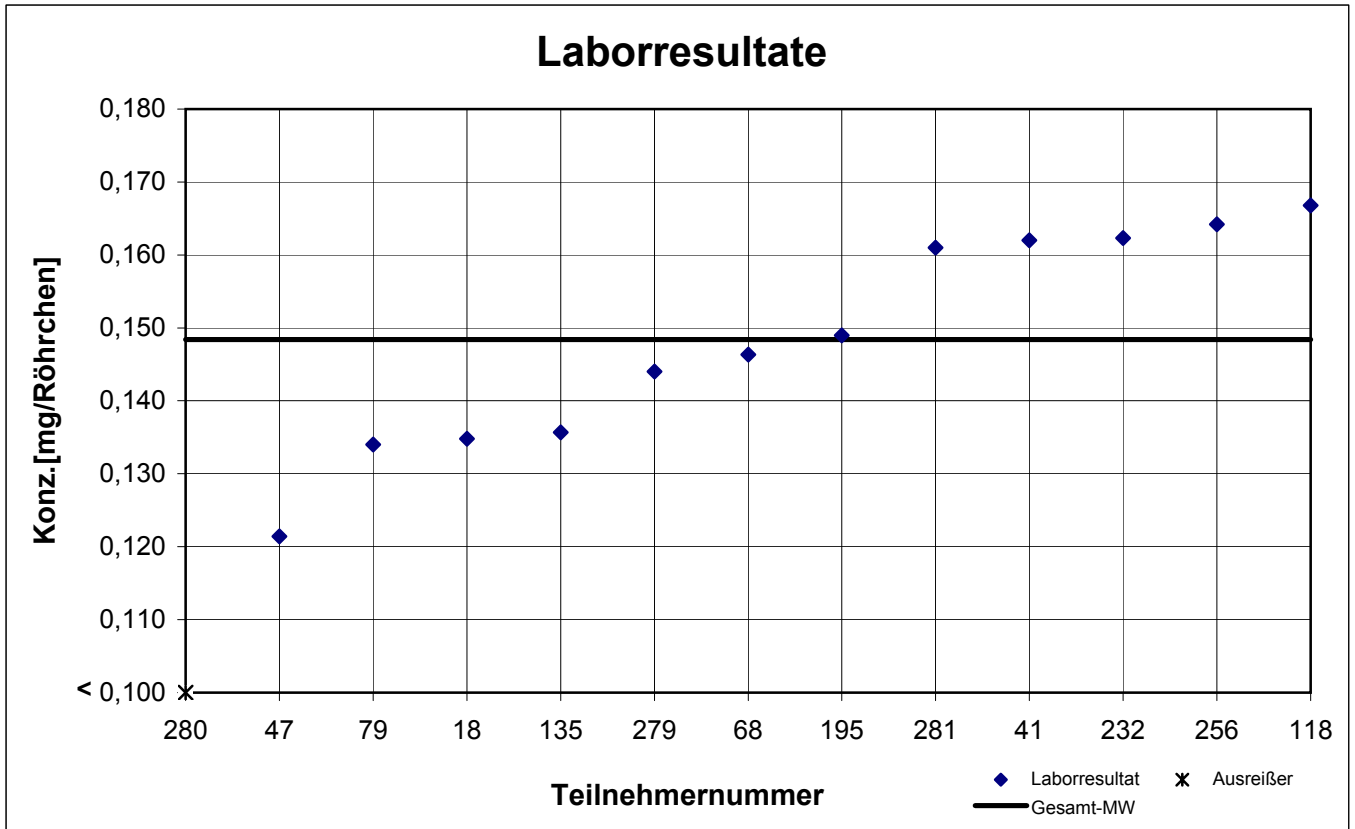
NIOSH -Probe 1

Ethylbenzol



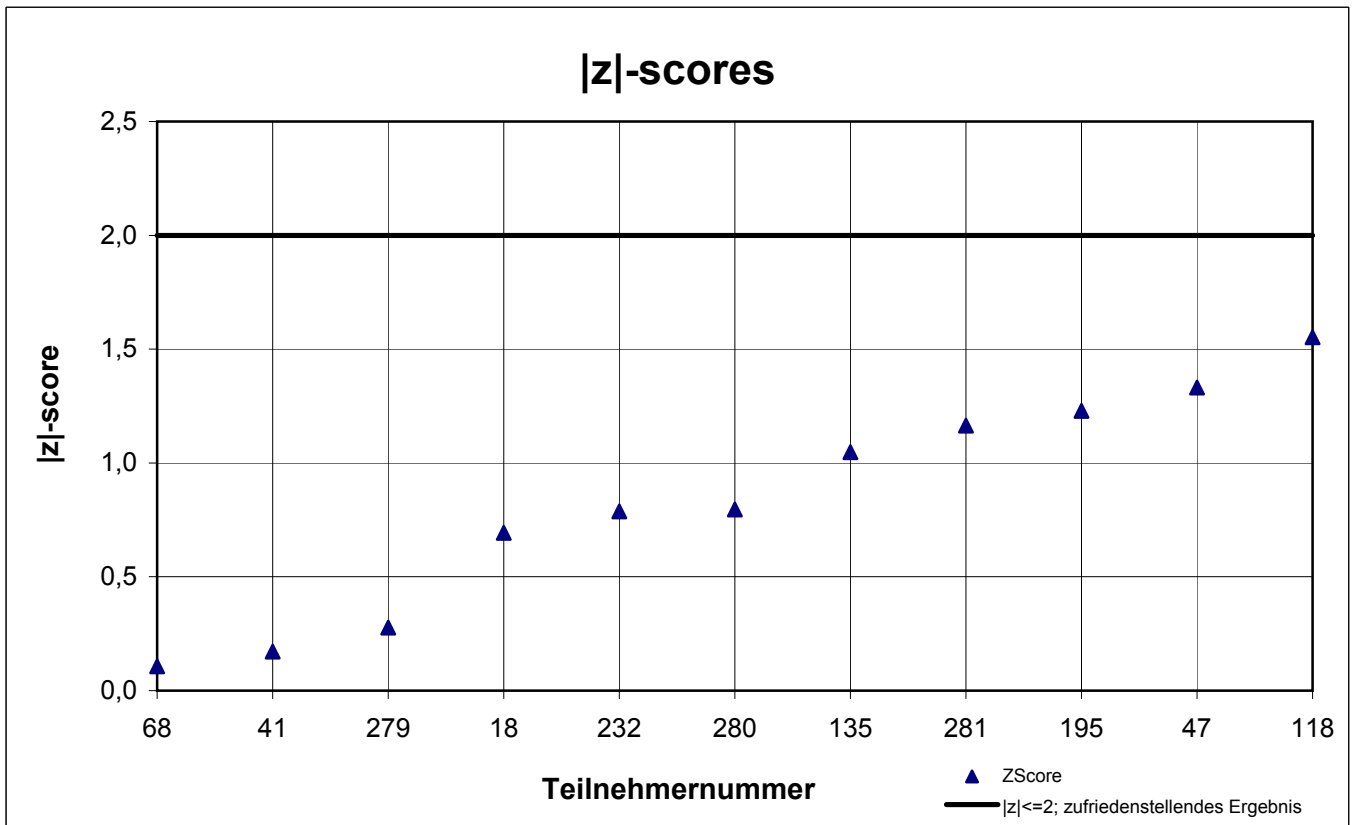
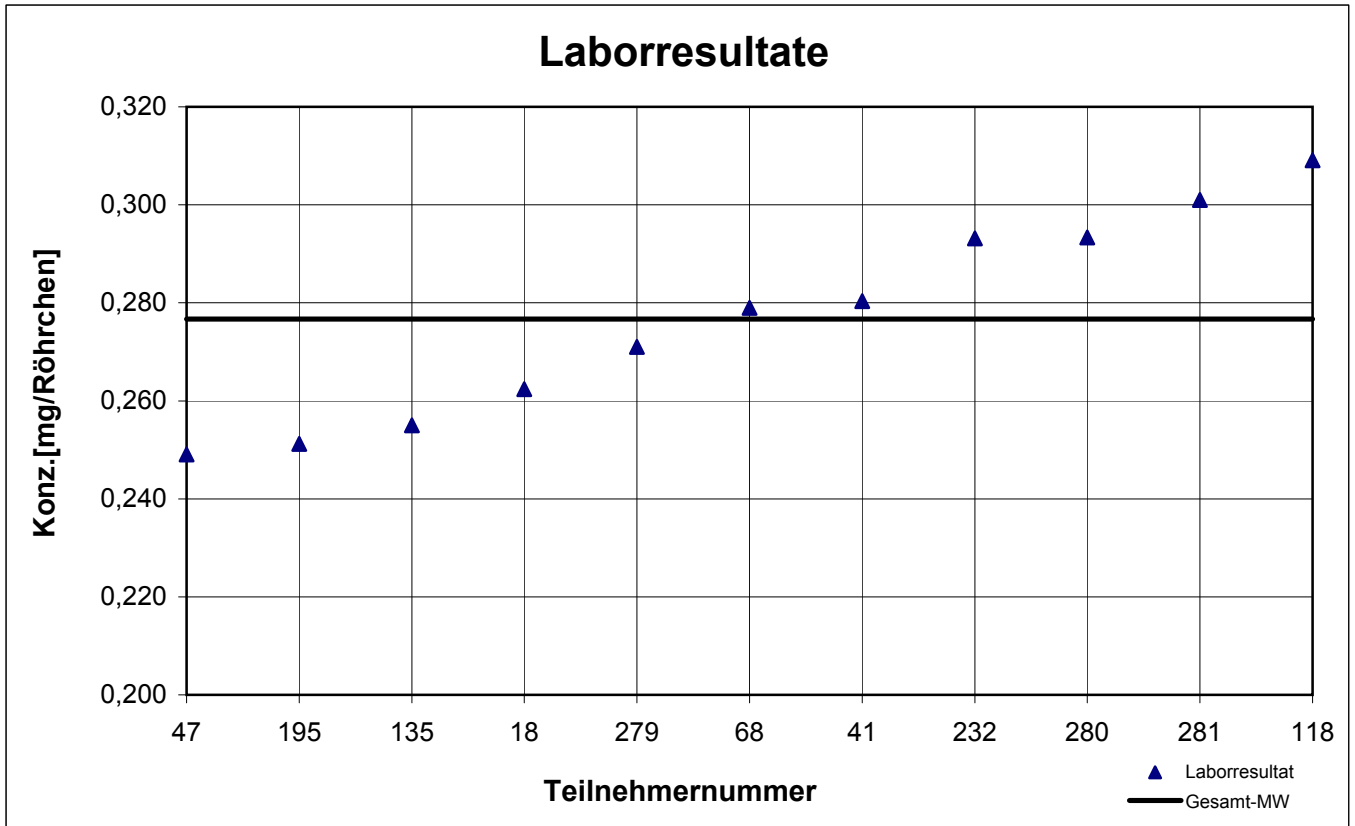
NIOSH -Probe 1

m-/p-Xylol



NIOSH -Probe 1

Tetrachlorethen



results NIOSH - sample 2

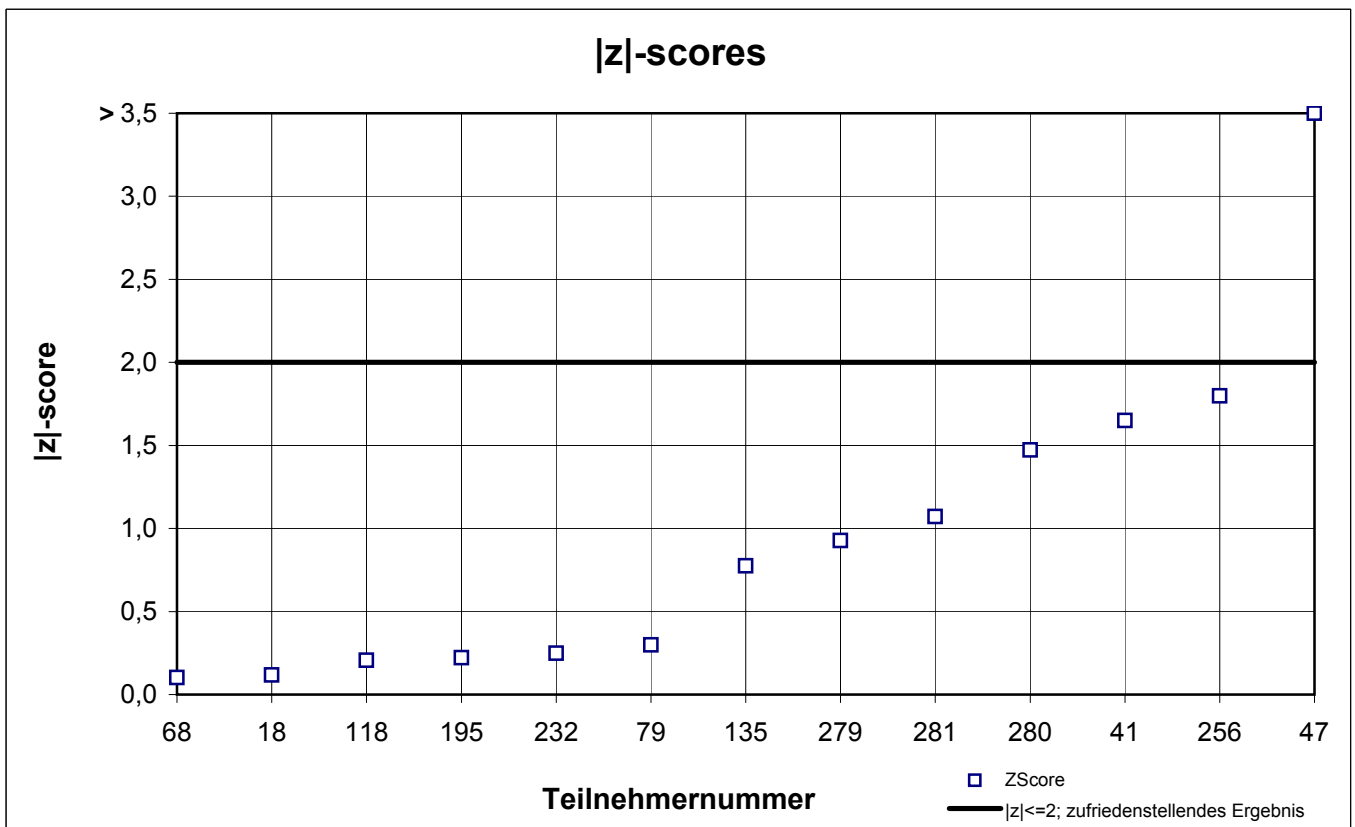
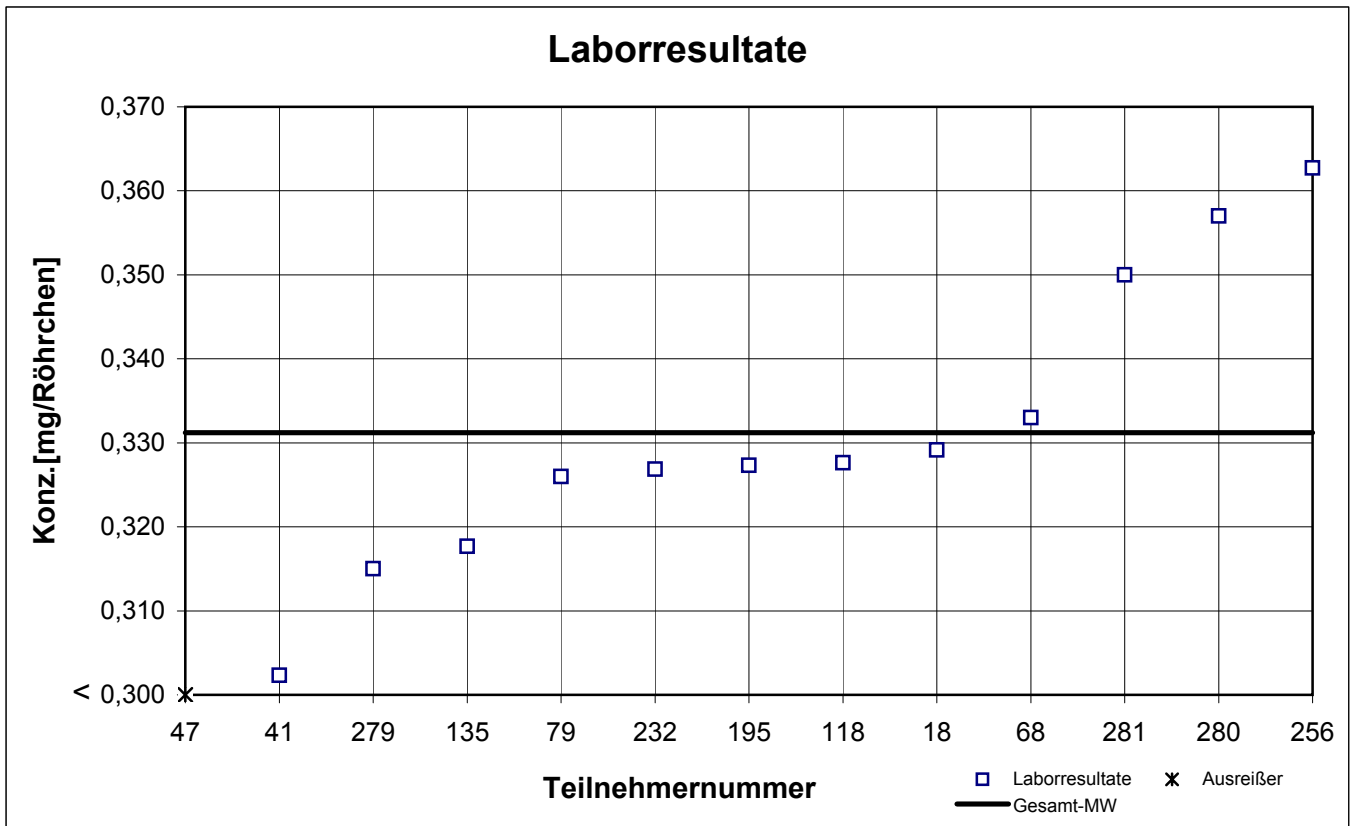
participant number	cyclohexane		ethyl acetate		n-heptane		n-propyl acetate	
	result [mg/tube]	z - score	result [mg/tube]	z - score	result [mg/tube]	z - score	result [mg/tube]	z - score
18	0,329	0,1	0,436	0,9	0,323	0,6	0,639	1,4
41	0,302	1,7	0,380	0,7	0,313	1,4	0,604	0,6
47	0,261	4,0	0,354	1,5	0,253	5,9	0,527	1,0
68	0,333	0,1	0,400	0,1	0,332	0,1	0,559	0,3
79	0,326	0,3	k.A.	k.A.	0,351	1,5	k.A.	k.A.
118	0,328	0,2	0,440	1,0	0,340	0,7	0,600	0,5
135	0,318	0,8	0,439	0,9	0,321	0,7	0,587	0,2
195	0,327	0,2	0,398	0,2	0,318	1,0	0,542	0,7
232	0,327	0,2	0,444	1,1	0,336	0,4	0,608	0,7
256	0,363	1,8	0,356	1,4	0,318	1,0	k.A.	k.A.
279	0,315	0,9	0,359	1,3	0,326	0,4	0,482	2,0
280	0,357	1,5	0,429	0,7	0,347	1,2	0,603	0,6
281	0,350	1,1	0,434	0,8	0,348	1,3	k.A.	k.A.

 marked fields are outliers!

	cyclo-hexane	ethyl acetate	n-heptane	n-propyl acetate
mean c_k [mg / tube]	0,331	0,406	0,331	0,575
standard deviation S_k [mg / tube]	0,0175	0,0358	0,0130	0,0470
relative standard deviation [%]	5,29	8,85	3,94	8,19

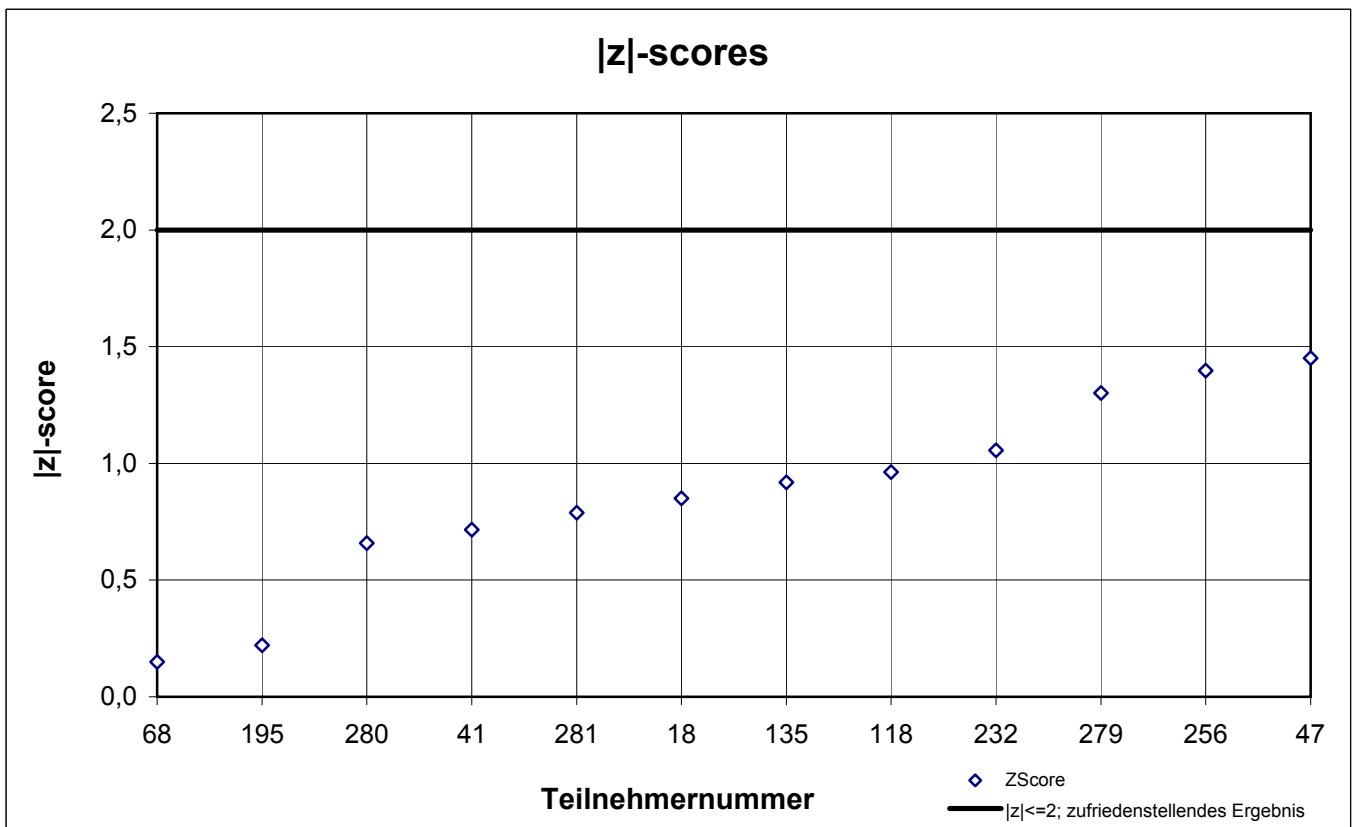
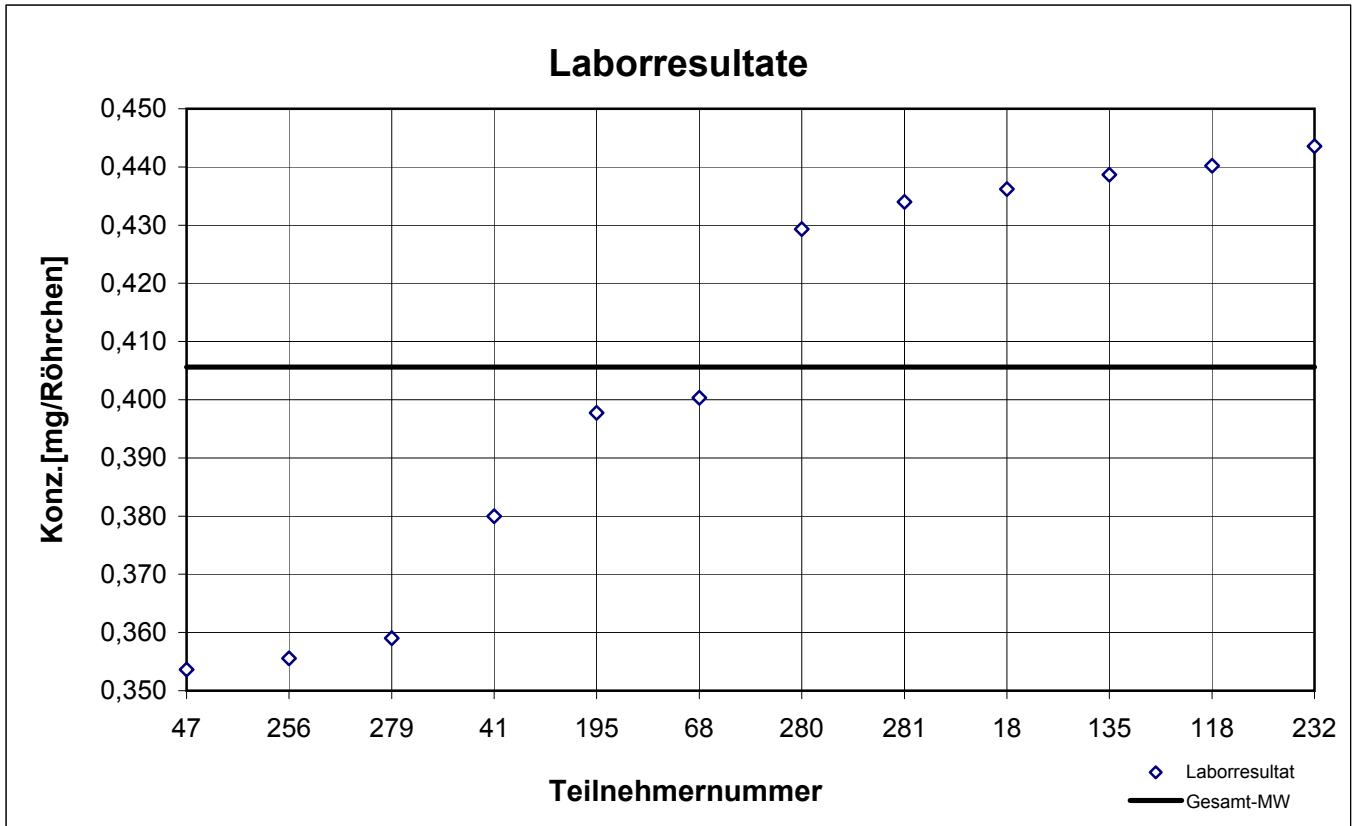
NIOSH -Probe 2

Cyclohexan



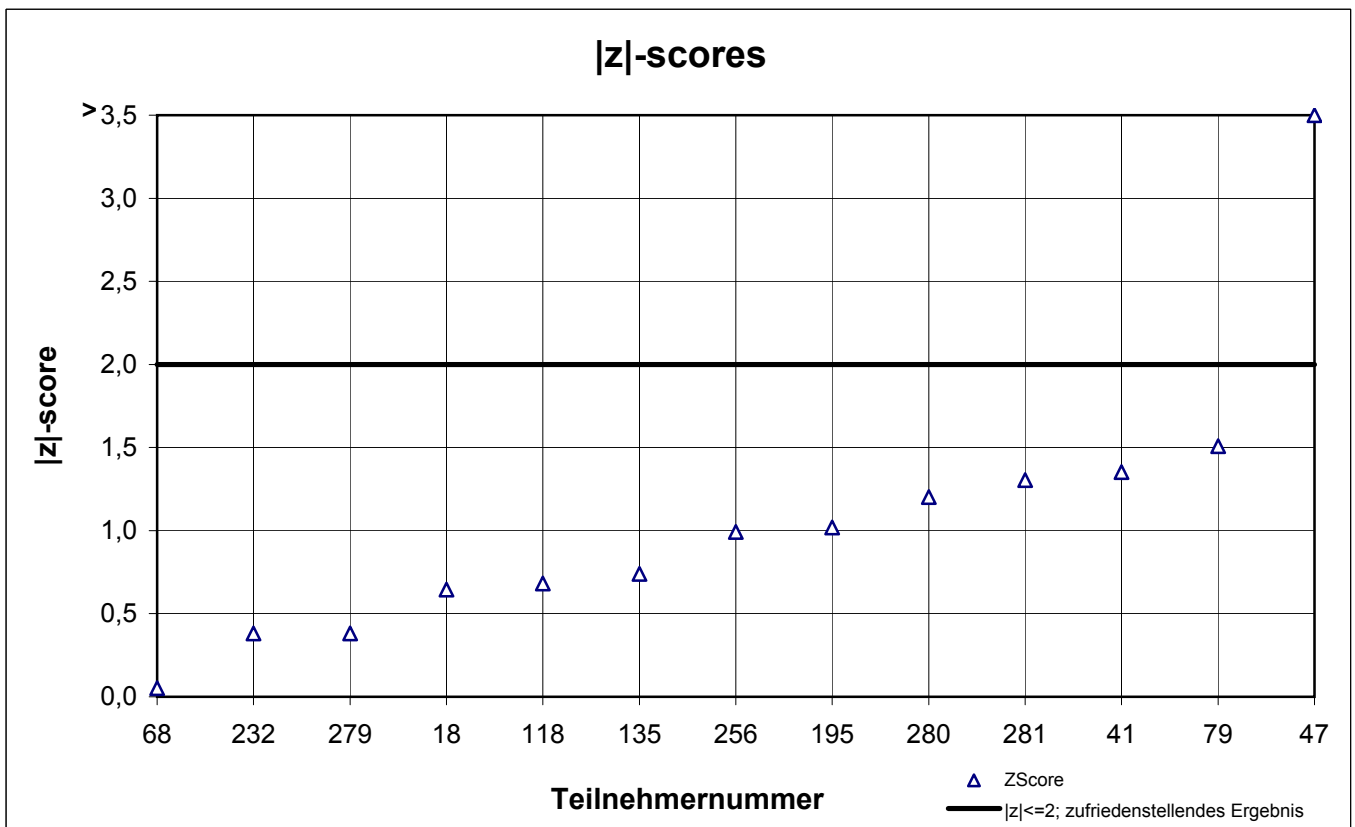
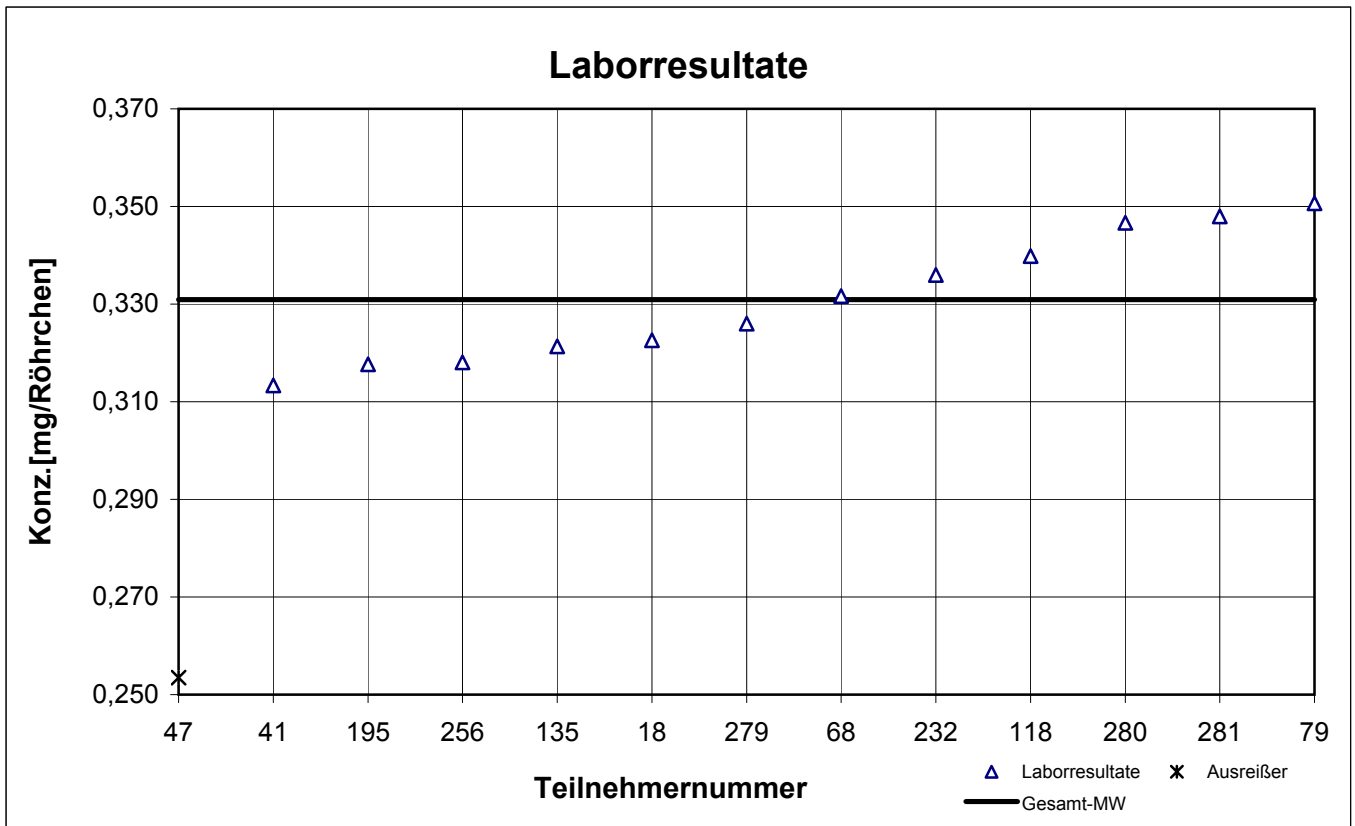
NIOSH -Probe 2

Ethylacetat



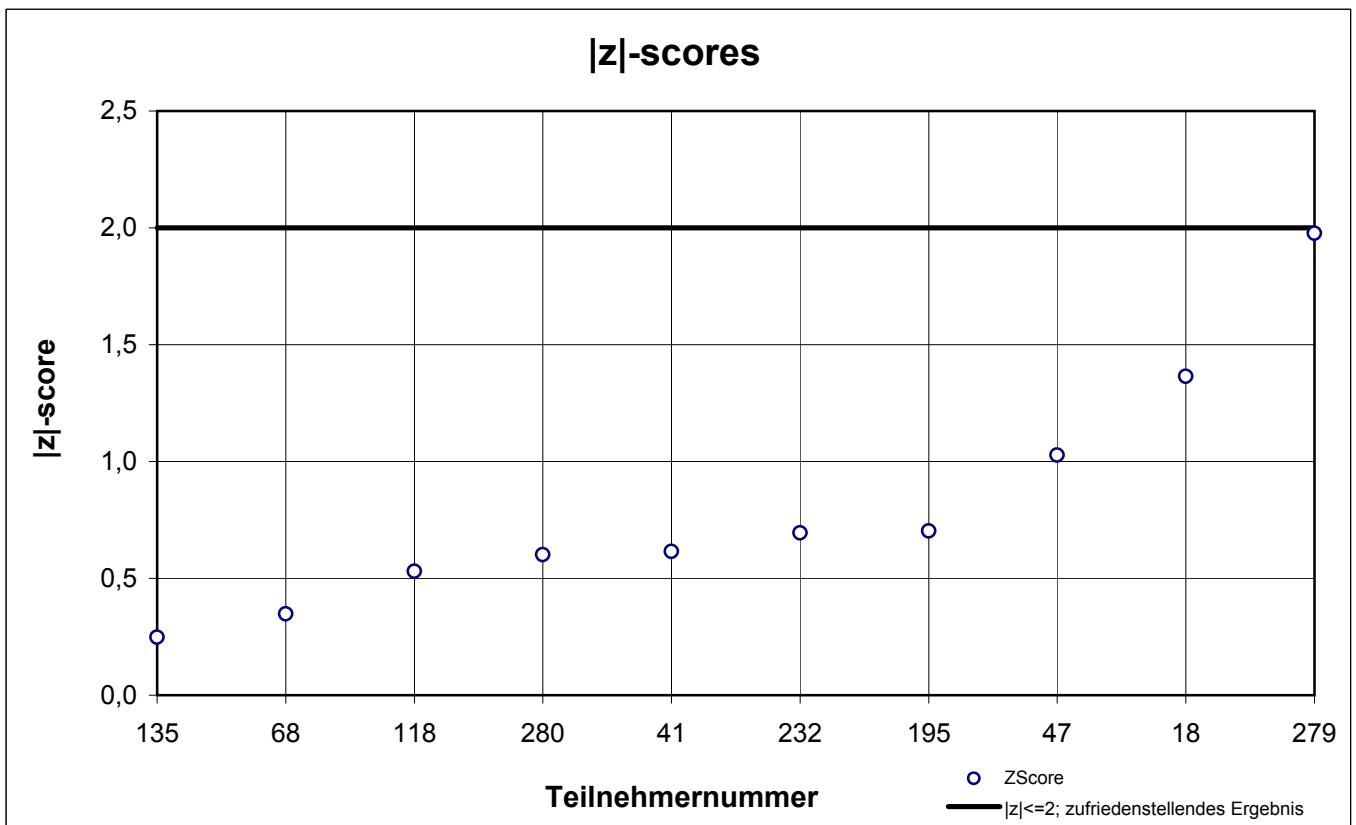
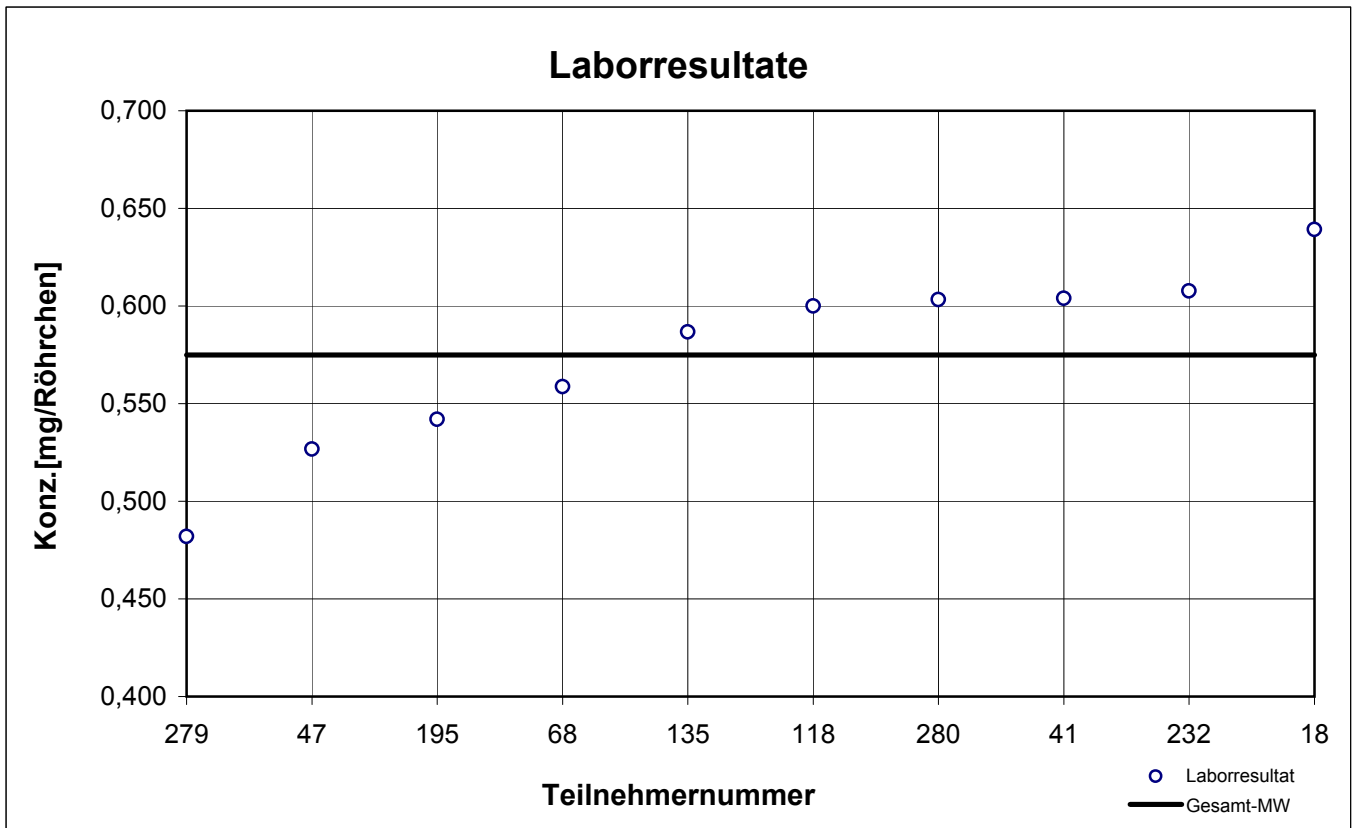
NIOSH -Probe 2

n-Heptan



NIOSH -Probe 2

n-Propylacetat



results NIOSH - sample 3

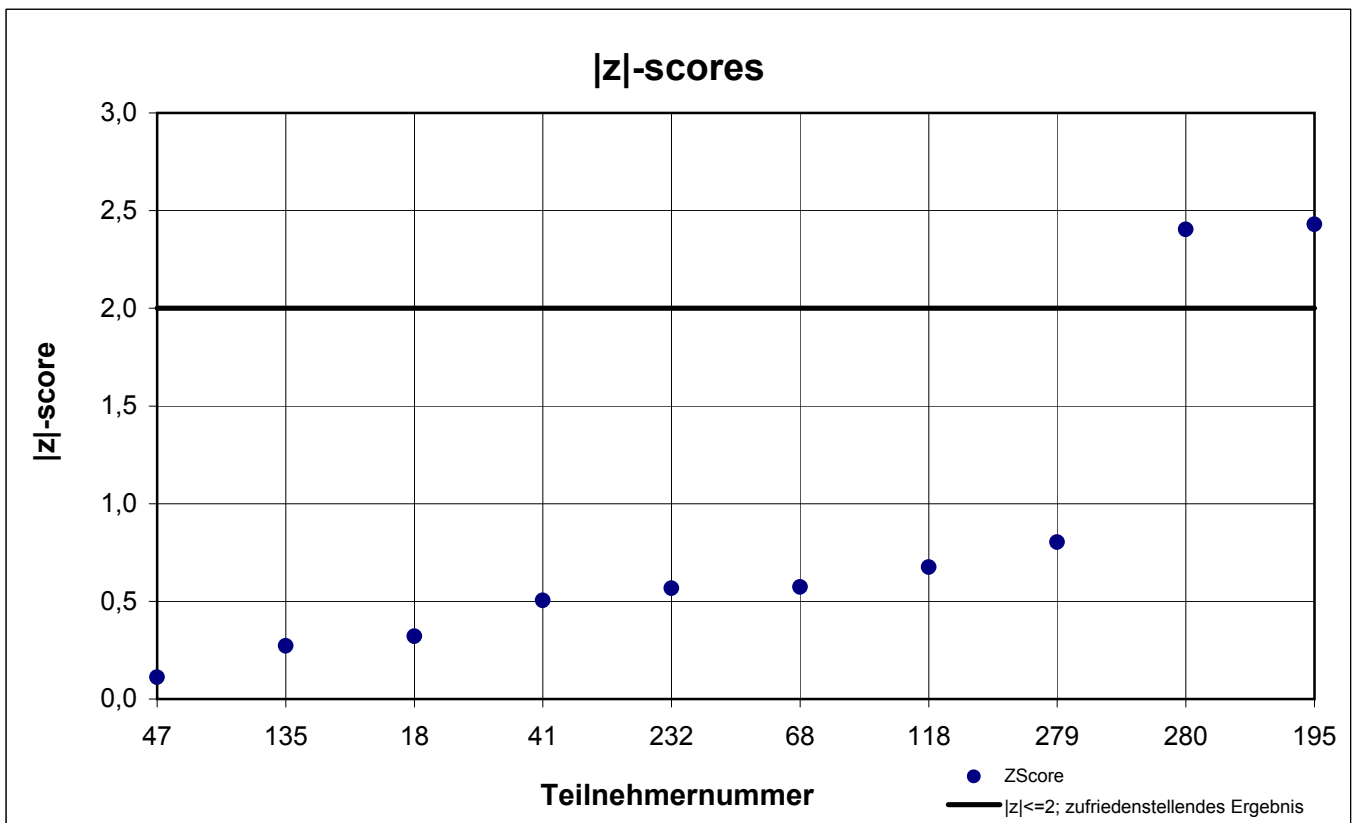
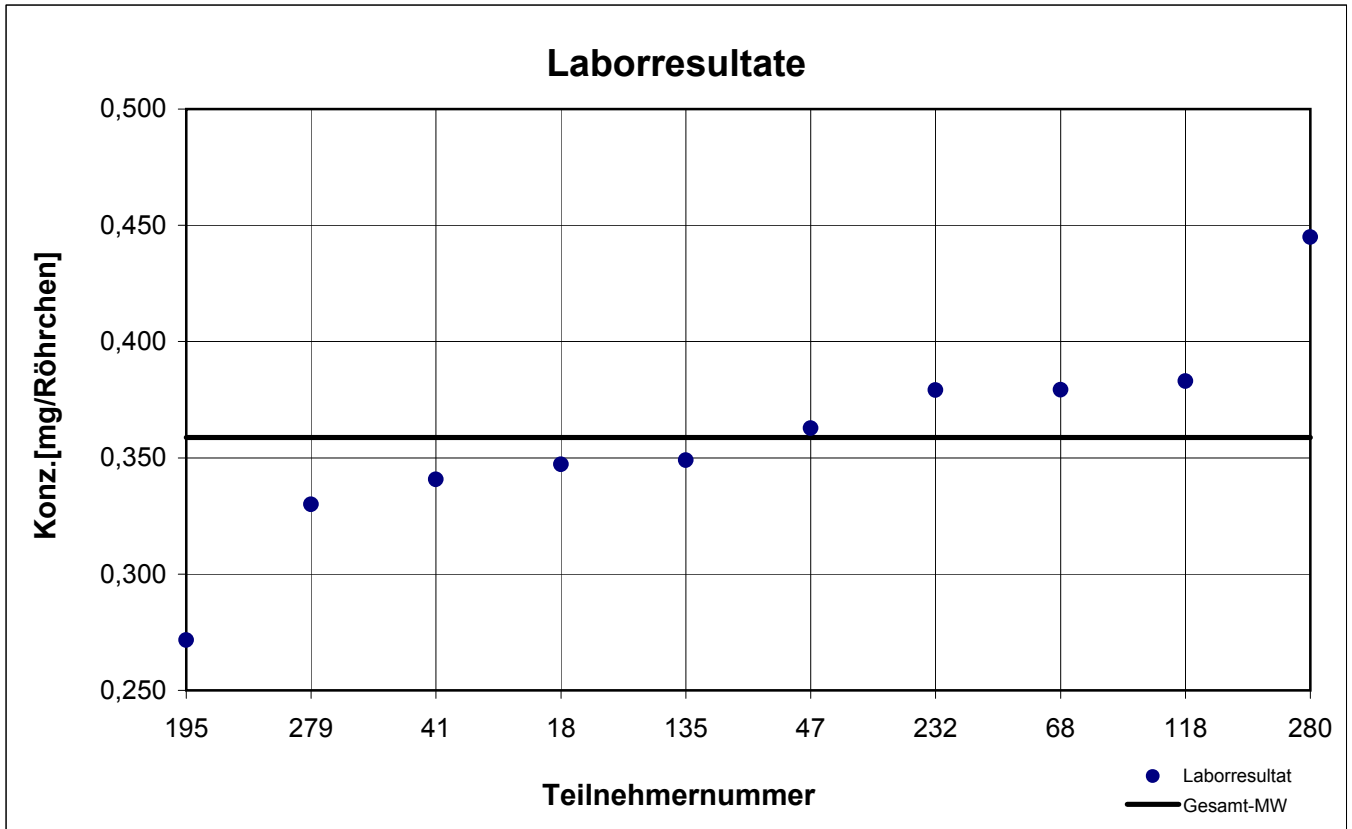
participant number	i-butylacetate		n-heptane		n-propyl acetate	
	result [mg/tube]	z - score	result [mg/tube]	z - score	result [mg/tube]	z - score
18	0,347	0,3	0,438	0,7	0,097	0,2
41	0,341	0,5	0,452	0,4	0,093	0,7
47	0,363	0,1	0,373	2,2	0,091	0,8
68	0,379	0,6	0,484	0,4	0,098	0,1
79	k.A.	k.A.	0,502	0,8	k.A.	k.A.
118	0,383	0,7	0,498	0,7	0,108	1,0
135	0,349	0,3	0,443	0,6	0,092	0,8
195	0,272	2,4	0,463	0,1	0,089	1,1
232	0,379	0,6	0,473	0,1	0,108	1,0
256	k.A.	k.A.	0,468	0,0	k.A.	k.A.
279	0,330	0,8	0,454	0,3	k.A.	k.A.
280	0,445	2,4	0,559	2,1	0,114	1,7
281	k.A.	k.A.	0,481	0,3	k.A.	k.A.

 marked fields are outliers!

	i-butyl acetate	n-heptane	n-propyl acetate
mean c_k [mg / tube]	0,359	0,468	0,099
standard deviation S_k [mg / tube]	0,0445	0,0427	0,0088
relative standard deviation [%]	12,42	9,13	8,92

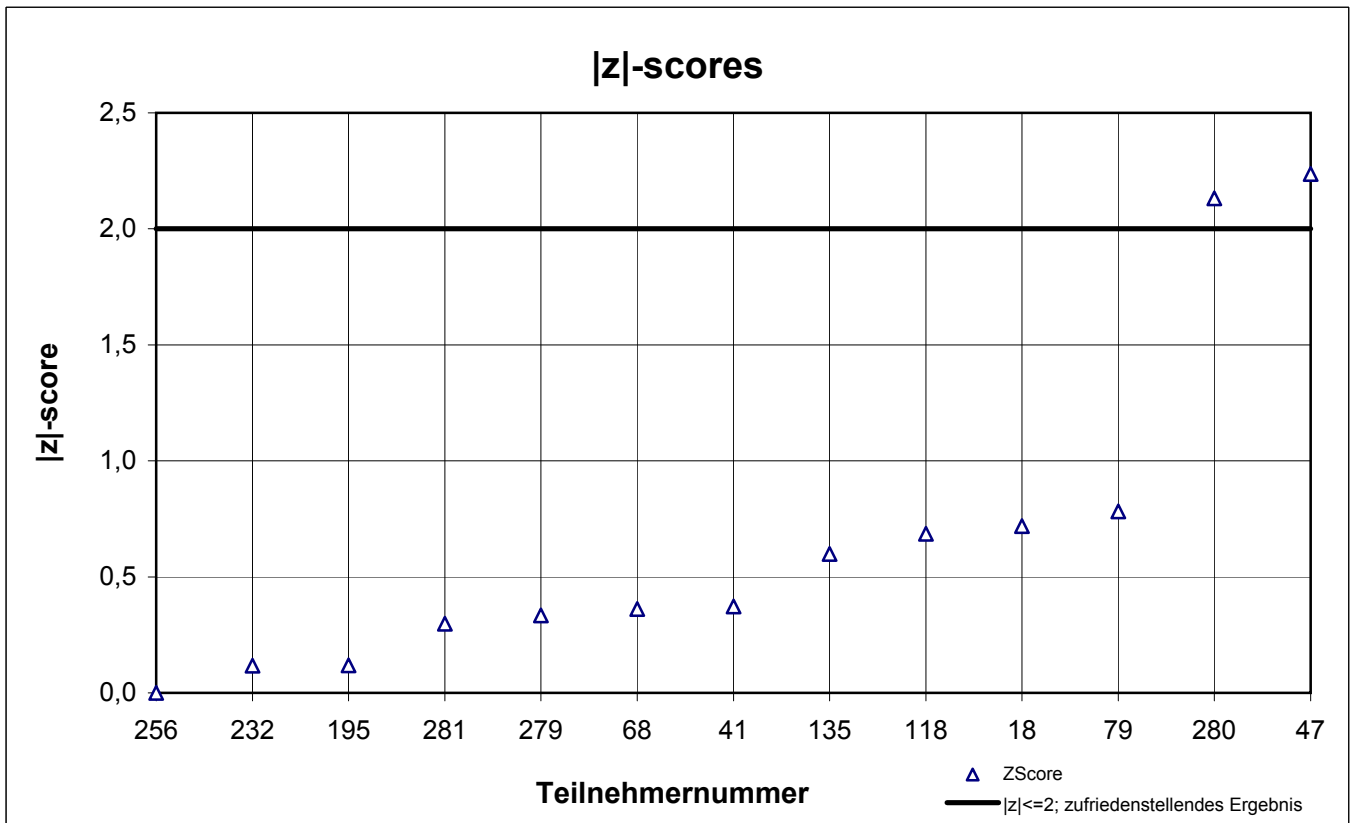
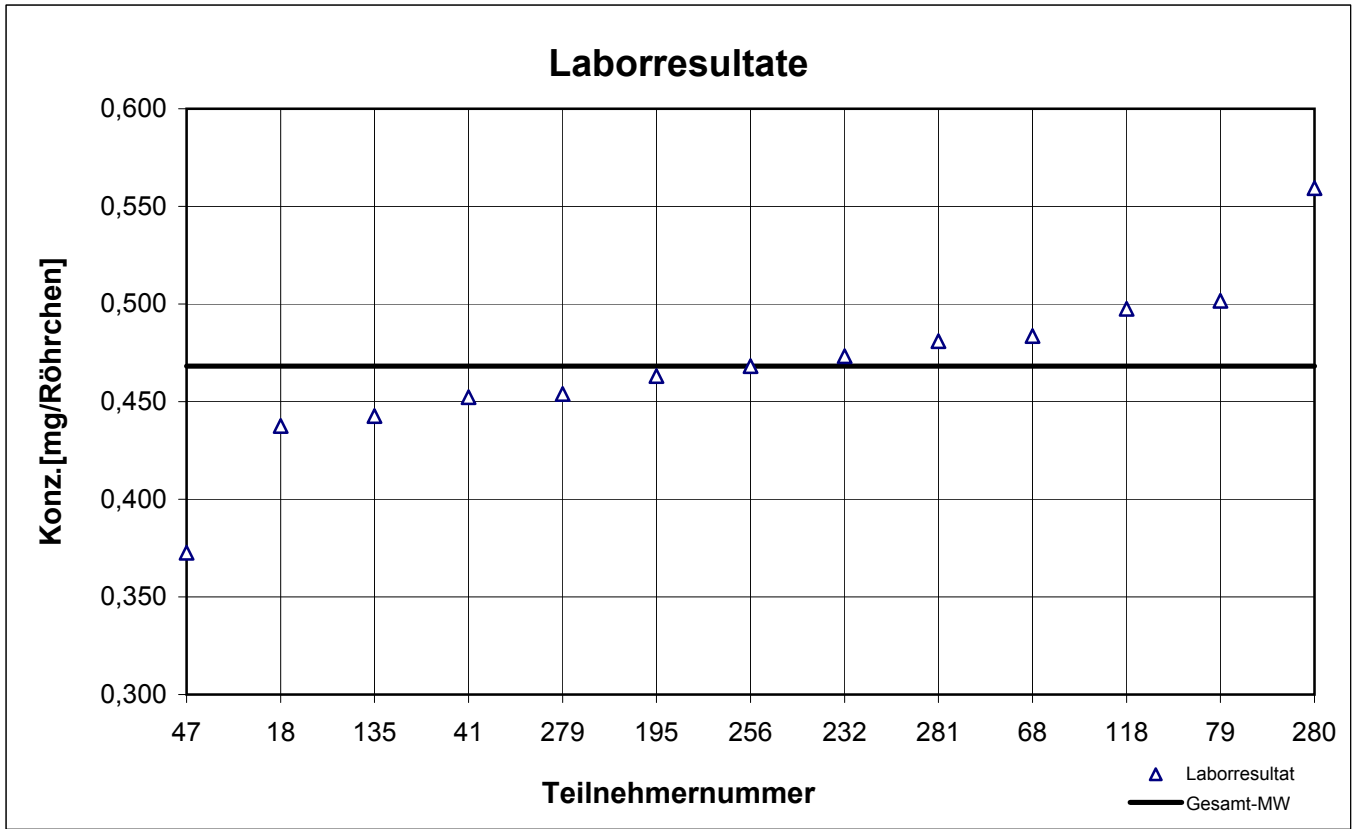
NIOSH -Probe 3

i-Butylacetat



NIOSH -Probe 3

n-Heptan



NIOSH -Probe 3

n-Propylacetat

